



Unbrako Taper Pressure Plugs

Taper Pressure Plugs are used in applications where a pressure-tight seal is needed with no leakage. Often confused with standard pipe plugs, Taper Pressure Plugs seal at pressures up to 5,000 psi and without a sealing compound. Pressure Plugs are most often used in hydraulic and pneumatic designs.

3/4 DRYSEAL TYPE PRODUCT ATTRIBUTES

Dry seal-thread form seals without need for compound.

Uniform taper of 3/4 inch per foot.

Controlled chamfer for faster starting.

Metric and Inch sizes available.

7/8 LEVEL SEAL® TYPE PRODUCT ATTRIBUTES

Interchangeable with 3/4 taper pressure plugs and will sit flush within its hole.

Flush seating is achieved through closer control of thread forms, sizes and taper.

THIS PRODUCT IS OFTEN CALLED...

Pipe Plug

WHERE YOU WILL FIND OPPORTUNITY

Hydraulics

Automotive

Petrochemical

Military

Machine Building

Aerospace

Heavy Machinery

Electronics




ADDITIONAL UNBRAKO SOCKET PRODUCTS

Socket Head Cap Screws

Socket Low Head Cap Screws

Socket Head Shoulder Screws

Button Head Socket Screws

Flat Head Countersunk Socket Screws

Flange Button Head Socket Screws

Hardened Ground Machine Dowel Pins

Socket Set Screws

Hexagon Wrenches

Pull Out Dowel Pins

AVAILABLE VALUE ADDED SERVICES

Secondary & rework services including drilling and center drilling

Custom plating services available

BACKED BY THE EARNEST

Service
GUARANTEE

**The right part.
The right quantity.
On-time.
Everytime.**

UNBRAKO 3/4" DRY SEAL TAPER PRESSURE PLUGS

Taper Pressure Plugs are manufactured in accordance with the latest revision of the following industry standards:

- ASME B31.3** Dimensions and Pressure Ratings
- SAE J531** Dimensions
- ASTM A574** Material
- ASME B18.18** Inspection and Quality Assurance

THREADS

NPTF (3/4 taper) thread requirements per ASME B1.20.3 - Dryseal Thread Form

PLATING

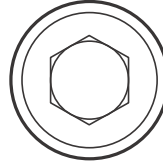
- Plain
- Black Oxide
- Teflon
- Custom plating available

MATERIAL

- Carbon Steel
- Alloy Steel
- Stainless Steel
- Brass

MATERIAL AND PHYSICAL PROPERTIES

Unbrako 3/4" Dry Seal Taper Pressure Plugs - Inch



Chemical Composition:

CARBON (C)	PHOSPHORUS (P)	SULFUR (S)
Min	Max	Max
0.33	0.035	0.040

Alloy

CONTAINS ONE OF THE FOLLOWING ALLOYS

Mn, Cr, Mo, Ni, V

Hardness:

ROCKWELL HARDNESS

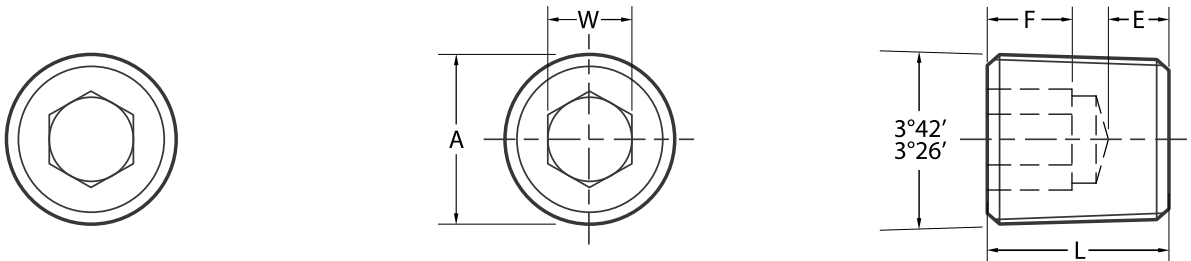
HRC 35/40

Pressure Rating:

PER ASME B31.3

Up to 5,000 psi

UNBRAKO 3/4" DRYSEAL TAPER PRESSURE PLUGS - NPTF THREAD



PLUG SIZE	THREADS PER INCH	HEAD DIAMETER (A)		HEX SOCKET SIZE (W)		SOCKET DEPTH (F)		LENGTH (L)	E		SOCKET DRILL SIZE
		REF	NOM	NOM	MIN	MIN	MIN				
1/16	27	0.318	0.156	0.140	0.312	0.062	15/64				
1/8	27	0.411	0.188	0.140	0.312	0.062	21/64				
1/4	18	0.545	0.250	0.218	0.437	0.073	27/64				
3/8	18	0.684	0.312	0.250	0.500	0.084	9/16				
1/2	14	0.847	0.375	0.312	0.562	0.095	11/16				
3/4	14	1.061	0.562	0.312	0.625	0.125	57/64				
1	11 1/2	1.333	0.625	0.375	0.750	0.125	1 1/8				
1 1/4	11 1/2	1.679	0.750	0.437	0.812	0.126	37.5 mm				
1 1/2	11 1/2	1.918	1.000	0.437	0.812	0.156	43.5 mm				
2	11 1/2	2.395	1.000	0.437	0.875	0.156	2 3/16				

*The specifications shown on this sheet are not intended to be used in the production of parts. Earnest Machine is not responsible or liable in any manner for any production errors and we certify the information present on this specification sheet is correct to the best of our knowledge. ©2021 Earnest Machine Products

UNBRAKO 7/8" LEVL SEAL TAPER PRESSURE PLUGS

Taper Pressure Plugs are manufactured in accordance with the latest revision of the following industry standards:

ASME B31.3	Dimensions and Pressure Ratings
SAE J531	Dimensions
ASTM A574	Material
ASME B18.18	Inspection and Quality Assurance

THREADS

NPT 7/8 Taper Style per Unbrako standards (design to fit into standard PTF threaded holes)

PLATING

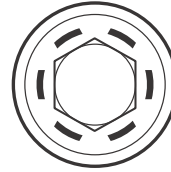
Plain
Black Oxide
Teflon
Custom plating available

MATERIAL

Carbon Steel
Alloy Steel
Stainless Steel
Brass

MATERIAL AND PHYSICAL PROPERTIES

Unbrako 7/8" Levl Seal Taper Pressure Plugs - Inch



Chemical Composition:

CARBON (C)	PHOSPHORUS (P)	SULFUR (S)
Min	Max	Max
0.33	0.035	0.040

Alloy

CONTAINS ONE OF THE FOLLOWING ALLOYS

Mn, Cr, Mo, Ni, V

Hardness:

ROCKWELL HARDNESS

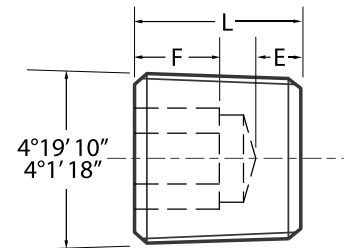
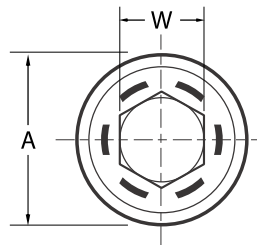
HRC 35/40

Pressure Rating:

PER ASME B31.3

Up to 5,000 psi

UNBRAKO 7/8" LEVL-SEAL TAPER PRESSURE PLUGS - NPT THREAD



THREAD SIZE	THREADS PER INCH	HEAD DIAMETER (A)		HEX SOCKET SIZE (W)		SOCKET DEPTH (F)		LENGTH (L)	E	TAP DRILL SIZE
		REF	NOM	MIN	MAX	MIN	MAX			
1/16	27	0.307	0.156	0.141	0.250	0.052	15/64			
1/8	27	0.401	0.188	0.141	0.250	0.049	21/64			
1/4	18	0.529	0.250	0.266	0.406	0.045	27/64			
3/8	18	0.667	0.312	0.266	0.406	0.040	9/16			
1/2	14	0.830	0.375	0.329	0.531	0.067	11/16			
3/4	14	1.041	0.562	0.329	0.531	0.054	57/64			
1	11 1/2	1.302	0.625	0.360	0.656	0.112	1 1/8			
1 1/4	11 1/2	1.647	0.750	0.360	0.656	0.102	37.5 mm			
1 1/2	11 1/2	1.885	0.750	0.360	0.656	0.102	43.5 mm			
2	11 1/2	2.360	1.000	0.360	0.656	0.084	2 3/16			

*The specifications shown on this sheet are not intended to be used in the production of parts. Earnest Machine is not responsible or liable in any manner for any production errors and we certify the information present on this specification sheet is correct to the best of our knowledge. ©2021 Earnest Machine Products

UNBRAKO BSPT 3/4" BSPT DRY SEAL TAPER PRESSURE PLUG

Taper Pressure Plugs are manufactured in accordance with the latest revision of the following industry standards:

- ASME B31.3** Dimensions and Pressure Ratings
- SAE J531** Dimensions
- ASTM A574** Material
- ASME B18.18** Inspection and Quality Assurance

THREADS

BSPT per ISO 7-1

PLATING

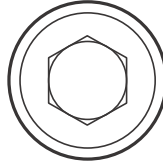
- Plain
- Black Oxide
- Teflon
- Custom plating available

MATERIAL

- Carbon Steel
- Alloy Steel
- Stainless Steel
- Brass

MATERIAL AND PHYSICAL PROPERTIES

Unbrako BSPT 3/4" Dry Seal Taper Pressure Plugs - Inch



Chemical Composition:

CARBON (C)	PHOSPHORUS (P)	SULFUR (S)
Min	Max	Max
0.33	0.035	0.040

Alloy

CONTAINS ONE OF THE FOLLOWING ALLOYS

Mn, Cr, Mo, Ni, V

Hardness:

ROCKWELL HARDNESS

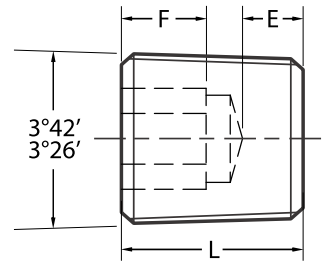
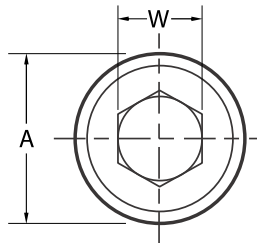
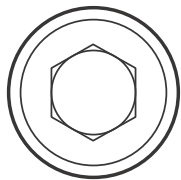
HRC 35/40

Pressure Rating:

PER ASME B31.3

Up to 5,000 psi

UNBRAKO 3/4" DRYSEAL TAPER PRESSURE PLUGS - BSPT THREAD



PLUG SIZE	THREADS PER INCH	HEAD DIAMETER (A)		HEX SOCKET SIZE (W)	SOCKET DEPTH (F)	LENGTH (L)		E	SOCKET DRILL SIZE
		MAX	MIN	NOM	MIN	MAX	MIN	MIN	
1/8	28	0.329	0.319	0.1875	0.183	0.385	0.365	0.076	4.9 mm
1/4	19	0.438	0.428	0.2500	0.245	0.510	0.490	0.107	6.5 mm
3/8	19	0.578	0.568	0.3125	0.276	0.573	0.553	0.139	8.1 mm
1/2	14	0.731	0.721	0.3750	0.339	0.698	0.678	0.170	9.75 mm
5/8	14	0.808	0.798	0.5000	0.370	0.760	0.740	0.170	13 mm
3/4	14	0.946	0.936	0.5625	0.370	0.823	0.803	0.232	14.5 mm
7/8	14	1.098	1.088	0.5625	0.442	0.885	0.865	0.232	14.5 mm
1	11	1.181	1.171	0.6250	0.558	1.010	0.990	0.232	16.5 mm
1 1/4	11	1.530	1.520	0.7500	0.677	1.260	1.240	0.300	19.5 mm
1 1/2	11	1.754	1.744	0.7500	0.677	1.260	1.240	0.300	19.5 mm

*The specifications shown on this sheet are not intended to be used in the production of parts. Earnest Machine is not responsible or liable in any manner for any production errors and we certify the information present on this specification sheet is correct to the best of our knowledge. ©2021 Earnest Machine Products

UNBRAKO METRIC TAPER PRESSURE PLUGS

Taper Pressure Plugs are manufactured in accordance with the latest revision of the following industry standards:

DIN 906 Dimensions and Pressure Ratings

ISO 898-1 Material

ISO 3269 Inspection and Quality Assurance

THREADS

Thread requirements per DIN 158

PLATING

Black Oxide

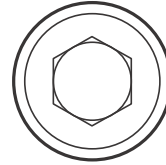
MATERIAL

Carbon Steel

Alloy Steel

MATERIAL AND PHYSICAL PROPERTIES

Unbrako Metric Taper Pressure Plugs - Inch



Chemical Composition:

CARBON (C)	PHOSPHORUS (P)	SULFUR (S)
Max	Max	Max
0.33	0.035	0.040

Hardness:

ROCKWELL HARDNESS

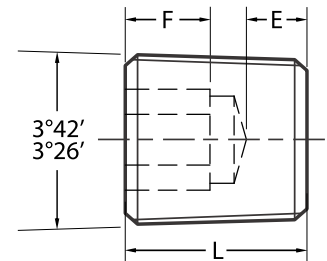
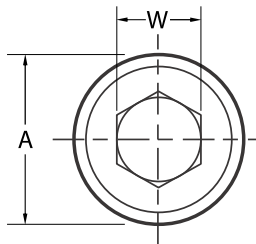
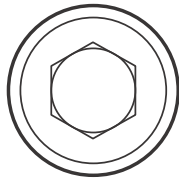
HRC 35/40

Pressure Rating:

PER DIN 158

Up to 35 MPa

UNBRAKO TAPER PRESSURE PLUGS - METRIC



PLUG SIZE	THREAD PITCH	HEAD DIAMETER (A)		HEX SOCKET SIZE (W)		SOCKET DEPTH (F)	LENGTH (L)		SOCKET DRILL SIZE
		MAX	MIN	MAX	MIN	MIN	MAX	MIN	
M8	1	6.66	6.41	4.07	4.02	4.00	8.25	7.75	4.14 mm
M10	1	8.66	8.41	5.08	5.02	4.00	8.25	7.75	5.15 mm
M12	1.5	10.09	9.84	6.09	6.02	5.00	10.25	9.75	6.17 mm
M14	1.5	12.09	11.84	7.11	7.03	5.00	10.25	9.75	7.20 mm
M16	1.5	14.09	13.84	8.11	8.03	5.00	10.25	9.75	8.20 mm
M18	1.5	16.09	15.84	8.11	8.03	5.00	10.25	9.75	8.20 mm
M20	1.5	18.09	17.84	10.12	10.03	5.00	10.25	9.75	10.23 mm
M22	1.5	20.09	19.84	10.12	10.03	5.00	10.25	9.75	10.23 mm
M24	1.5	22.22	21.97	12.13	12.04	6.00	12.25	11.75	12.28 mm
M26	1.5	24.22	23.97	12.13	12.04	6.00	12.25	11.75	12.28 mm
M30	1.5	28.22	27.97	17.15	17.05	6.00	12.25	11.75	17.30 mm

*The specifications shown on this sheet are not intended to be used in the production of parts. Earnest Machine is not responsible or liable in any manner for any production errors and we certify the information present on this specification sheet is correct to the best of our knowledge. ©2021 Earnest Machine Products

Inquire today at **800.327.6378** or visit **EarnestMachine.com**

Unbrako 3/4" Dryseal Taper Pressure Plugs - Inch

SIZE	DESCRIPTION	TYPE	MATERIAL	FINISH	UNBRAKO PART #	EARNEST PART #
1/16-27	3/4 Taper Pressure Plug	Dryseal	Stainless Steel	Passivated	102262	971000
1/16-27	3/4 Taper Pressure Plug	Dryseal	Brass	Plain	102940	971012
1/16-27	3/4 Taper Pressure Plug	Dryseal	Alloy Steel	Black Oxide	117052	971006

1/8-27	3/4 Taper Pressure Plug	Dryseal	Stainless Steel	Passivated	102182	971018
1/8-27	3/4 Taper Pressure Plug	Dryseal	Brass	Plain	103266	971030
1/8-27	3/4 Taper Pressure Plug	Dryseal	Alloy Steel	Black Oxide	117068	971024

1/4-18	3/4 Taper Pressure Plug	Dryseal	Stainless Steel	Passivated	102076	971039
1/4-18	3/4 Taper Pressure Plug	Dryseal	Brass	Plain	103164	971051
1/4-18	3/4 Taper Pressure Plug	Dryseal	Alloy Steel	Black Oxide	117084	971045

3/8-18	3/4 Taper Pressure Plug	Dryseal	Brass	Plain	103072	971072
3/8-18	3/4 Taper Pressure Plug	Dryseal	Stainless Steel	Passivated	110890	971060
3/8-18	3/4 Taper Pressure Plug	Dryseal	Alloy Steel	Black Oxide	118963	971066

1/2-14	3/4 Taper Pressure Plug	Dryseal	Alloy Steel	Black Oxide	103846	971084
1/2-14	3/4 Taper Pressure Plug	Dryseal	Stainless Steel	Passivated	110779	971081

3/4-14	3/4 Taper Pressure Plug	Dryseal	Alloy Steel	Black Oxide	103747	971111
--------	-------------------------	---------	-------------	-------------	--------	--------

1-11-1/2	3/4 Taper Pressure Plug	Dryseal	Alloy Steel	Black Oxide	103644	971132
1-1/4-11-1/2	3/4 Taper Pressure Plug	Dryseal	Alloy Steel	Black Oxide	103588	971114

Unbrako 3/4" BSPT Dryseal Taper Pressure Plugs - Inch

SIZE	DESCRIPTION	TYPE	MATERIAL	FINISH	UNBRAKO PART #	EARNEST PART #
1/8-28	3/4 Taper Pressure Plug	Dryseal	Alloy Steel	Black Oxide	402208	971036
1/4-19	3/4 Taper Pressure Plug	Dryseal	Alloy Steel	Black Oxide	402209	971057
3/8-19	3/4 Taper Pressure Plug	Dryseal	Alloy Steel	Black Oxide	402210	971078
1/2-14	3/4 Taper Pressure Plug	Dryseal	Alloy Steel	Black Oxide	402211	971093
5/8-14	3/4 Taper Pressure Plug	Dryseal	Alloy Steel	Black Oxide	402212	971099
3/4-14	3/4 Taper Pressure Plug	Dryseal	Alloy Steel	Black Oxide	402213	971105
1-11	3/4 Taper Pressure Plug	Dryseal	Alloy Steel	Black Oxide	402214	971126
1-1/4-11	3/4 Taper Pressure Plug	Dryseal	Alloy Steel	Black Oxide	402215	971117
1-1/2-11	3/4 Taper Pressure Plug	Dryseal	Alloy Steel	Black Oxide	402216	971123

Unbrako 7/8" Dryseal Taper Pressure Plugs - Inch

SIZE	DESCRIPTION	TYPE	MATERIAL	FINISH	UNBRAKO PART #	EARNEST PART #
1/16-27	7/8 Taper Pressure Plug	Level-Seal	Alloy Steel	Black Oxide	107577	971003
1/16-27	7/8 Taper Pressure Plug	Level-Seal	Brass	Plain	134502	971015
1/16-27	7/8 Taper Pressure Plug	Level-Seal	Alloy Steel	Teflon	796087	971009

1/8-27	7/8 Taper Pressure Plug	Level-Seal	Alloy Steel	Black Oxide	107593	971021
1/8-27	7/8 Taper Pressure Plug	Level-Seal	Brass	Plain	134503	971033
1/8-27	7/8 Taper Pressure Plug	Level-Seal	Alloy Steel	Teflon	138240	971027
1/8-27	7/8 Taper Pressure Plug	Level-Seal	Stainless Steel	Passivated	183840	971029

1/4-18	7/8 Taper Pressure Plug	Level-Seal	Brass	Plain	134504	971054
1/4-18	7/8 Taper Pressure Plug	Level-Seal	Alloy Steel	Teflon	138241	971048
1/4-18	7/8 Taper Pressure Plug	Level-Seal	Alloy Steel	Black Oxide	105766	971042

3/8-18	7/8 Taper Pressure Plug	Level-Seal	Brass	Plain	134505	971075
3/8-18	7/8 Taper Pressure Plug	Level-Seal	Alloy Steel	Teflon	796086	971069
3/8-18	7/8 Taper Pressure Plug	Level-Seal	Alloy Steel	Black Oxide	105782	971063

1/2-14	7/8 Taper Pressure Plug	Level-Seal	Alloy Steel	Black Oxide	112286	971087
1/2-14	7/8 Taper Pressure Plug	Level-Seal	Brass	Plain	134506	971096
1/2-14	7/8 Taper Pressure Plug	Level-Seal	Alloy Steel	Teflon	138243	971090

3/4-14	7/8 Taper Pressure Plug	Level-Seal	Alloy Steel	Black Oxide	109168	971102
3/4-14	7/8 Taper Pressure Plug	Level-Seal	Alloy Steel	Teflon	796088	971108

1-11-1/2	7/8 Taper Pressure Plug	Level-Seal	Alloy Steel	Black Oxide	109184	971129
1-11-1/2	7/8 Taper Pressure Plug	Level-Seal	Alloy Steel	Teflon	796089	971135

1-1/4-11-1/2	7/8 Taper Pressure Plug	Level-Seal	Alloy Steel	Black Oxide	109201	971120
--------------	-------------------------	------------	-------------	-------------	--------	--------

Unbrako DIN 906 Taper Pressure Plugs - Metric

SIZE	DESCRIPTION	TYPE	MATERIAL	FINISH	UNBRAKO PART #	EARNEST PART #
M8-1.0	Taper Pressure Plug	Metric	Alloy Steel	Black Oxide	402218	971156
M10-1.0	Taper Pressure Plug	Metric	Alloy Steel	Black Oxide	402219	971138
M12-1.5	Taper Pressure Plug	Metric	Alloy Steel	Black Oxide	402220	971141
M16-1.5	Taper Pressure Plug	Metric	Alloy Steel	Black Oxide	402221	971144
M18-1.5	Taper Pressure Plug	Metric	Alloy Steel	Black Oxide	402222	971147
M20-1.5	Taper Pressure Plug	Metric	Alloy Steel	Black Oxide	402223	971150
M22-1.5	Taper Pressure Plug	Metric	Alloy Steel	Black Oxide	402224	971153