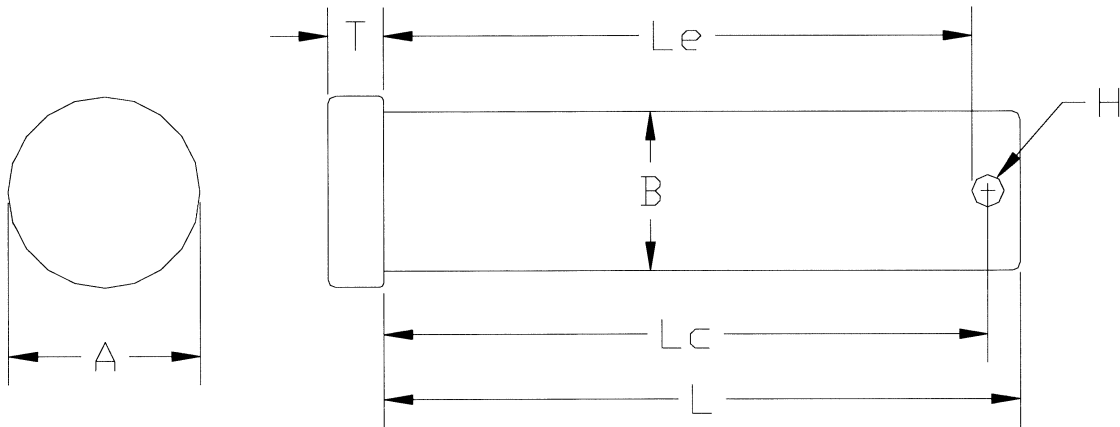


Listed below are the dimensions for longer lengths of 3/4 and 1" clevis pins.

If special Effective Lengths, Hole Sizes or Head Dimensions are required note them on the drawing below.



Dia	Length	Body Dia	Head Dia	Head Thickness	Length to Center of Hole	Length to Edge of Hole	Hole Dia.
	L	B	A	T	Lc	Le	H
3/4	3 1/2	.746 / .741	.94 / .90	.26 / .24	3.344	3.266	.156
3/4	4	.746 / .741	.94 / .90	.26 / .24	3.844	3.766	.156
1	3	.996 / .961	1.19 / 1.18	.35 / .33	2.797	2.703	.203
1	4	.996 / .961	1.19 / 1.18	.35 / .33	3.797	3.703	.203
1	6	.996 / .961	1.19 / 1.18	.35 / .33	5.797	5.703	.203
1	7	.996 / .961	1.19 / 1.18	.35 / .33	6.797	6.703	.203

Material: Low Carbon Steel

Finish: Plain