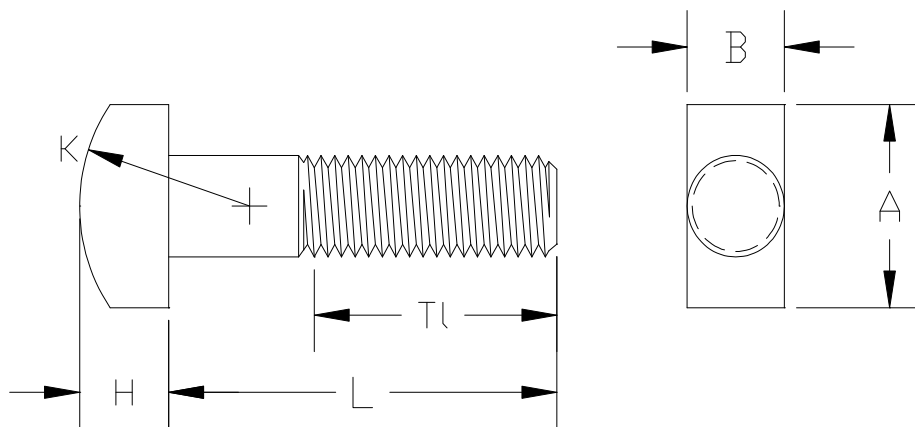


Earnest Machine Products line of T Head Bolts are manufactured to the dimensional requirements specified in ASME/ANSI B18.5.2. T Head bolts are used in multiple applications and are popular for use in clamping fixtures on machine tools and in pipe clamps. The T head design permits the head to be inserted into a slot and with a 90-degree turn of the head, it is held in place. The width of the head (and of the groove it can be inserted into) is equal to the thread diameter.

Earnest stocks diameters 3/8, 1/2 and 3/4 in the most popular lengths.

The material and physical properties meet the requirements specified in SAE J429 for Grade 5 screws.

	Tensile Strength	Rockwell Hardness
Dia up to 1”:	120,000 psi min	Rc 25/34



Earnest P/N	Size	Body Dia	Head Length A	Head Height H	Head Width B	Head Radius K	Thread Length Lt
			Max / Min	Max / Min	Max / Min	Ref	Min
823905	3/8 – 16 x 1 1/4	.388 / .360	.750 / .731	.331 / .295	.405 / .368	.625	1.000
823906	1/2 – 13 x 1 3/4	.515 / .483	1.000 / .975	.458 / .418	.530 / .492	.875	1.250
823907	1/2 – 13 x 2	.515 / .483	1.000 / .975	.458 / .418	.530 / .492	.875	1.250
823908	1/2 – 13 x 2 1/8	.515 / .483	1.000 / .975	.458 / .418	.530 / .492	.875	1.250
823909	1/2 – 13 x 2 1/2	.515 / .483	1.000 / .975	.458 / .418	.530 / .492	.875	1.250
823912	3/4 – 10 x 2 3/4	.768 / .729	1.500 / 1.462	.649 / .601	.800 / .741	1.250	1.750
823913	3/4 – 10 x 3	.768 / .729	1.500 / 1.462	.649 / .601	.800 / .741	1.250	1.750