



Hex Jam Nuts

Reduced thickness for low clearance applications.

Hex Jam Nuts are half the thickness of standard Hex Nuts and are commonly used in applications where a nut with a low profile thickness is needed. This nut can also be used with a standard Hex Nut to create a locking action in your assembly. Earnest Machine stocks the largest selection of Hex Jam Nuts in industry, offering both inch and metric sizes with a variety of strength levels, thread directions, and finishes to choose from.

PRODUCT ATTRIBUTES

Low profile thickness
Can be used with a Hex Nut to create a locking action
Wide variety of right & left handed threads available
Sizes range from 1/4" to 3" & M5 to M24 in diameter

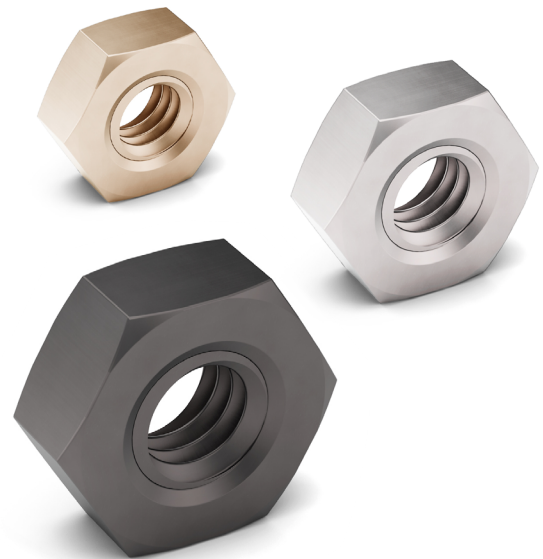
MARKETS FOR HEX JAM NUTS

Pump Shafts
Rotating Spindle Applications
Diesel Engine Assemblies
Hydraulic Piston Assemblies

THIS PRODUCT IS OFTEN CALLED...

Thin Nut
Half Nut
Spindle Nut
Piston Nut

*The specifications shown on this sheet are not intended to be used in the production of parts. Earnest Machine is not responsible or liable in any manner for any production errors and we certify the information present on this specification sheet is correct to the best of our knowledge. ©2021 Earnest Machine Products



ADDITIONAL NUTS WE SUPPLY

Heavy Hex Jam Nuts
Finished Hex Nuts
Square Nuts
Slotted Nuts
All Metal Lock Nuts
Nylon Insert Lock Nuts

AVAILABLE VALUE ADDED SERVICES

Bulk, full & broken case quantities
Secondary & rework services available
Custom packaging services
Custom plating

BACKED BY THE EARNEST
Service
GUARANTEE

**The right part.
The right quantity.
On-time.
Everytime.**

GRADE 8 HEX JAM NUTS

Hex Jam Nuts are manufactured in accordance with the latest revision of the following industry standards:

- ASME B18.2.2** Dimensional Requirements
- SAE J995** Material and Strength Level
- ASME B1.1** Thread Requirements
- SAE J122** Surface Discontinuities
- ASME B18.18** Inspection and Quality Assurance

THREADS

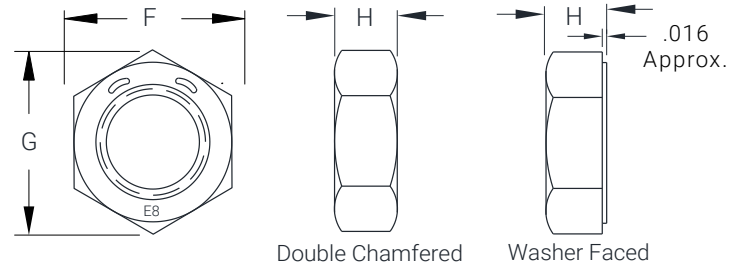
Threads made to requirements of ASME B1.1 Unified Threads (UNC and UNF) Class 2B
Thread acceptance per ASME B1.3, System 21

PLATING

- Plain
- Phos and Oil
- Zinc Clear (RoHS compliant Cr3+)
- Zinc Yellow

MATERIAL AND PHYSICAL PROPERTIES

Grade 8



Chemical Composition:

CARBON (C)	MANGANESE (Mn)	PHOSPHORUS (P)	SULFUR (S)
Max	Min	Max	Max
0.55	0.30	0.04	0.05

Hardness Level

DIAMETER	GRADE 8
1/4 - 5/8	HRC 24/32
3/4 - 1	HRC 25/34
1 1/8 - 3	HRC 26/36

Proof Load Strength

GRADE 8
90,000 psi min

DIMENSIONS FOR GRADE 8 HEX JAM NUTS

SIZE	WIDTH ACROSS FLATS (F)		WIDTH ACROSS CORNERS (G)		THICKNESS (H)	
	MAX	MIN	MAX	MIN	MAX	MIN
1/4	0.438	0.428	0.505	0.488	0.164	0.150
5/16	0.500	0.489	0.577	0.557	0.195	0.180
3/8	0.562	0.551	0.650	0.628	0.227	0.210
7/16	0.688	0.675	0.794	0.768	0.260	0.240
1/2	0.750	0.736	0.866	0.840	0.323	0.302
9/16	0.875	0.861	1.010	0.982	0.324	0.301
5/8	0.938	0.922	1.083	1.051	0.387	0.363
3/4	1.125	1.088	1.299	1.240	0.446	0.398
7/8	1.312	1.269	1.516	1.447	0.510	0.458
1	1.500	1.450	1.732	1.653	0.575	0.519
1 1/8	1.688	1.631	1.949	1.859	0.639	0.579
1 1/4	1.875	1.812	2.165	2.066	0.751	0.687
1 3/8	2.062	1.994	2.382	2.273	0.815	0.747
1 1/2	2.250	2.175	2.598	2.480	0.880	0.808
1 5/8	2.438	2.356	2.815	2.686	0.945	0.868
1 3/4	2.625	2.538	3.031	2.893	1.009	0.929
1 7/8	2.812	2.718	3.248	3.100	1.073	0.989
2	3.000	2.900	3.464	3.306	1.138	1.050
2 1/4	3.375	3.262	3.897	3.719	1.267	1.155
2 1/2	3.750	3.625	4.330	4.133	1.505	1.401
2 3/4	4.125	3.988	4.763	4.546	1.634	1.413
3	4.500	4.350	5.196	4.959	1.763	1.534

GRADE 5 HEX JAM NUTS

Hex Jam Nuts are manufactured in accordance with the latest revision of the following industry standards:

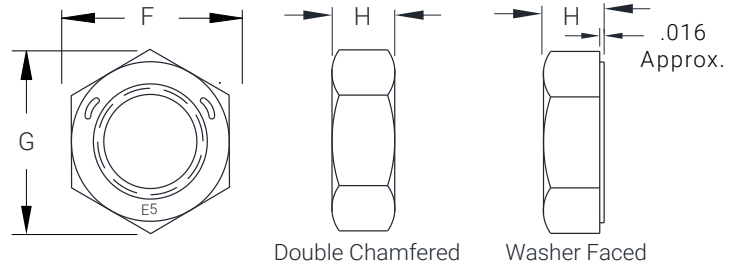
- ASME B18.2.2** Dimensional Requirements
- SAE J995** Material and Strength Level
- ASME B1.1** Thread Requirements
- SAE J122** Surface Discontinuities
- ASME B18.18** Inspection and Quality Assurance

THREADS

Threads made to requirements of ASME B1.1 Unified Threads (UNC and UNF) Class 2B
Thread acceptance per ASME B1.3, System 21

PLATING

- Plain
- Phos and Oil
- Zinc Clear (RoHS compliant Cr3+)
- Zinc Yellow

MATERIAL AND PHYSICAL PROPERTIES
Grade 5

Grade 5 Chemical Composition:

CARBON (C)	MANGANESE (Mn)	PHOSPHORUS (P)	SULFUR (S)
Max	Min	Max	Max
0.55	0.30	0.05	0.15

Hardness Level

GRADE 5
HRC 32 Max

Proof Load Strength

DIAMETER	COARSE THREAD	FINE THREAD
1/4 - 1	72,000 psi min	65,000 psi min
1 1/8 - 3	63,000 psi min	57,000 psi min

DIMENSIONS FOR GRADE 5 HEX JAM NUTS

SIZE	WIDTH ACROSS FLATS (F)		WIDTH ACROSS CORNERS (G)		THICKNESS (H)	
	MAX	MIN	MAX	MIN	MAX	MIN
1/4	0.438	0.428	0.505	0.488	0.164	0.150
5/16	0.500	0.489	0.577	0.557	0.195	0.180
3/8	0.562	0.551	0.650	0.628	0.227	0.210
7/16	0.688	0.675	0.794	0.768	0.260	0.240
1/2	0.750	0.736	0.866	0.840	0.323	0.302
9/16	0.875	0.861	1.010	0.982	0.324	0.301
5/8	0.938	0.922	1.083	1.051	0.387	0.363
3/4	1.125	1.088	1.299	1.240	0.446	0.398
7/8	1.312	1.269	1.516	1.447	0.510	0.458
1	1.500	1.450	1.732	1.653	0.575	0.519
1 1/8	1.688	1.631	1.949	1.859	0.639	0.579
1 1/4	1.875	1.812	2.165	2.066	0.751	0.687
1 3/8	2.062	1.994	2.382	2.273	0.815	0.747
1 1/2	2.250	2.175	2.598	2.480	0.880	0.808
1 5/8	2.438	2.356	2.815	2.686	0.945	0.868
1 3/4	2.625	2.538	3.031	2.893	1.009	0.929
1 7/8	2.812	2.718	3.248	3.100	1.073	0.989
2	3.000	2.900	3.464	3.306	1.138	1.050
2 1/4	3.375	3.262	3.897	3.719	1.267	1.155
2 1/2	3.750	3.625	4.330	4.133	1.505	1.401
2 3/4	4.125	3.988	4.763	4.546	1.634	1.413
3	4.500	4.350	5.196	4.959	1.763	1.534

GRADE 2/GRADE A HEX JAM NUTS

Hex Jam Nuts are manufactured in accordance with the latest revision of the following industry standards:

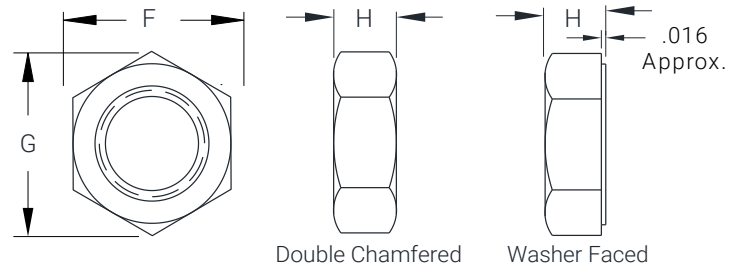
- ASME B18.2.2** Dimensional Requirements
- SAE J995** Material and Strength Level
- ASTM A563** Material and Strength Level
- ASME B1.1** Thread Requirements
- SAE J122** Surface Discontinuities
- ASME B18.18** Inspection and Quality Assurance

THREADS

Threads made to requirements of ASME B1.1 Unified Threads (UNC and UNF) Class 2B Thread acceptance per ASME B1.3, System 21

PLATING

Plain
Zinc Clear (RoHS compliant Cr3+)
Zinc Yellow

MATERIAL AND PHYSICAL PROPERTIES
Grade 2/Grade A

Chemical Composition:

CARBON (C)	PHOSPHORUS (P)	SULFUR (S)
Max	Max	Max
0.55	0.12	0.15

Hardness Level

GRADE 2/GRADE A
HRC 32 Max

Proof Load Strength

DIAMETER	COARSE THREAD	FINE THREAD
1/4 - 3	54,000 psi min	48,000 psi min

DIMENSIONS FOR GRADE 2/GRADE A HEX JAM NUTS

SIZE	WIDTH ACROSS FLATS (F)		WIDTH ACROSS CORNERS (G)		THICKNESS (H)	
	MAX	MIN	MAX	MIN	MAX	MIN
1/4	0.438	0.428	0.505	0.488	0.164	0.150
5/16	0.500	0.489	0.577	0.557	0.195	0.180
3/8	0.562	0.551	0.650	0.628	0.227	0.210
7/16	0.688	0.675	0.794	0.768	0.260	0.240
1/2	0.750	0.736	0.866	0.840	0.323	0.302
9/16	0.875	0.861	1.010	0.982	0.324	0.301
5/8	0.938	0.922	1.083	1.051	0.387	0.363
3/4	1.125	1.088	1.299	1.240	0.446	0.398
7/8	1.312	1.269	1.516	1.447	0.510	0.458
1	1.500	1.450	1.732	1.653	0.575	0.519
1 1/8	1.688	1.631	1.949	1.859	0.639	0.579
1 1/4	1.875	1.812	2.165	2.066	0.751	0.687
1 3/8	2.062	1.994	2.382	2.273	0.815	0.747
1 1/2	2.250	2.175	2.598	2.480	0.880	0.808
1 5/8	2.438	2.356	2.815	2.686	0.945	0.868
1 3/4	2.625	2.538	3.031	2.893	1.009	0.929
1 7/8	2.812	2.718	3.248	3.100	1.073	0.989
2	3.000	2.900	3.464	3.306	1.138	1.050
2 1/4	3.375	3.262	3.897	3.719	1.267	1.155
2 1/2	3.750	3.625	4.330	4.133	1.505	1.401
2 3/4	4.125	3.988	4.763	4.546	1.634	1.413
3	4.500	4.350	5.196	4.959	1.763	1.534

18/8 STAINLESS STEEL HEX JAM NUTS

Hex Jam Nuts are manufactured in accordance with the latest revision of the following industry standards:

- ASME B18.2.2** Dimensional Requirements
- ASTM F594** Material and Strength Level
- ASME B1.1** Thread Requirements
- SAE J122** Surface Discontinuities
- ASME B18.18** Inspection and Quality Assurance

THREADS

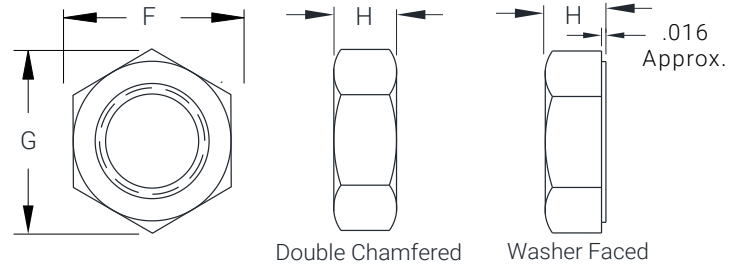
Threads made to requirements of ASME B1.1
 Unified Threads (UNF) Class 2B
 Thread acceptance per ASME B1.3, System 21

PLATING

Plain (Passivated)

MATERIAL AND PHYSICAL PROPERTIES

18/8 Stainless Steel



Chemical Composition:

CARBON (C)	MANGANESE (Mn)	PHOSPHORUS (P)	SULFUR (S)	SILICON (Si)	CHROMIUM (Cr)		NICKEL (Ni)	
Max	Max	Max	Max	Max	Max	Min	Max	Min
0.08	2.00	0.045	0.03	1.00	20.0	18.0	10.5	8.0

Hardness Level

18/8 STAINLESS STEEL HARDNESS LEVEL

HRB 80 min

Proof Load Strength

CLASS 8.8

75,000 psi min

DIMENSIONS FOR 18/8 HEX JAM NUTS

SIZE	WIDTH ACROSS FLATS (F)		WIDTH ACROSS CORNERS (G)		THICKNESS (H)	
	MAX	MIN	MAX	MIN	MAX	MIN
1/4	0.438	0.428	0.505	0.488	0.164	0.150
5/16	0.500	0.489	0.577	0.557	0.195	0.180
3/8	0.562	0.551	0.650	0.628	0.227	0.210
7/16	0.688	0.675	0.794	0.768	0.260	0.240
1/2	0.750	0.736	0.866	0.840	0.323	0.302
9/16	0.875	0.861	1.010	0.982	0.324	0.301
5/8	0.938	0.922	1.083	1.051	0.387	0.363
3/4	1.125	1.088	1.299	1.240	0.446	0.398
7/8	1.312	1.269	1.516	1.447	0.510	0.458
1	1.500	1.450	1.732	1.653	0.575	0.519

PROPERTY CLASS 04 & 05

Hex Jam Nuts are manufactured in accordance with the latest revision of the following industry standards:

DIN 439-2	Dimensional Requirements
ISO 4035	Dimensional Requirements
ISO 898-2	Material and Strength Level
ISO 261	Thread Requirements
ISO 6157	Surface Discontinuities
ISO 3269	Inspection and Quality Assurance

THREADS

Threads made to requirements of ISO 261
 ISO 965-2 Class 6H
 Thread acceptance per ISO 1502

PLATING

Plain
 Zinc Clear (RoHS compliant Cr3+)
 Zinc Yellow

DIMENSIONS FOR ISO 4035

METRIC CLASS 04 & 05 HEX JAM NUTS

SIZE	WIDTH ACROSS FLATS (F)		WIDTH ACROSS CORNERS (E)	THICKNESS (M)	
	MAX	MIN	MIN	MAX	MIN
M10	16.0	15.73	17.77	5.0	4.7
M12	18.0	17.73	20.03	6.0	5.7
M14	21.0	20.67	23.35	7.0	6.42

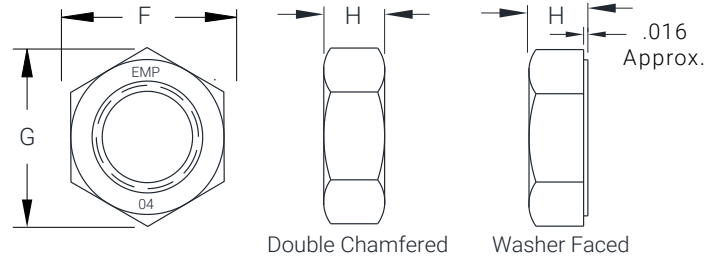
DIMENSIONS FOR DIN 439-2

METRIC CLASS 04 & 05 HEX JAM NUTS

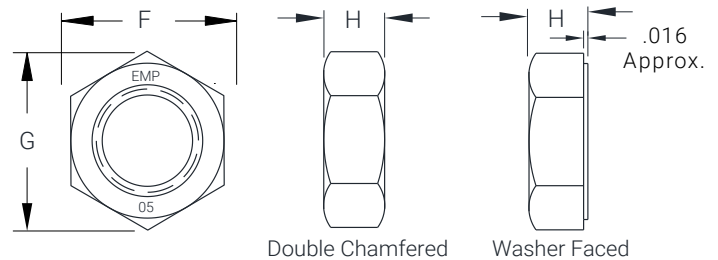
SIZE	WIDTH ACROSS FLATS (F)		WIDTH ACROSS CORNERS (E)	THICKNESS (M)	
	MAX	MIN	MIN	MAX	MIN
M5	8.0	7.78	8.79	2.7	2.45
M6	10.0	9.78	11.05	3.2	2.9
M8	13.0	12.73	14.38	4.0	3.7
M10	17.0	16.73	18.9	5.0	4.7
M12	19.0	18.67	21.1	6.0	5.7
M14	22.0	21.67	24.49	7.0	6.42
M16	24.0	23.67	26.75	8.0	7.42
M18	27.0	26.16	29.56	9.0	8.42
M20	30.0	29.16	32.95	10.0	9.1
M24	36.0	35.0	39.55	12.0	10.9

MATERIAL AND PHYSICAL PROPERTIES

Property Class 04



Property Class 05



Property Class 04 Chemical Composition:

CARBON (C)	MANGANESE (Mn)	PHOSPHORUS (P)	SULFUR (S)
Max	Min	Max	Max
0.58	0.25	0.060	0.150

Property Class 05 Chemical Composition:

CARBON (C)	MANGANESE (Mn)	PHOSPHORUS (P)	SULFUR (S)
Max	Min	Max	Max
0.58	0.30	0.048	0.58

Hardness Level

PROPERTY CLASS 04	PROPERTY CLASS 05
HV 188/302	HV 272/353

Proof Load Strength

PROPERTY CLASS 04	PROPERTY CLASS 05
380 MPa min	500 MPa min

Hex Jam Nuts - Inch

Grade 8

SIZE	GRADE	PITCH	THREAD DIRECTION	FINISH	PART #
1/4-20	GR 8	Coarse	Right	Plain Finish	341018
1/4-20	GR 8	Coarse	Right	Zinc Yellow	341017

1/4-28	GR 8	Fine	Right	Plain Finish	341028
1/4-28	GR 8	Fine	Right	Zinc Yellow	341027
1/4-28	GR 8	Fine	Left	Plain Finish	333028
1/4-28	GR 8	Fine	Left	Zinc Yellow	333029

5/16-18	GR 8	Coarse	Right	Plain Finish	341038
5/16-18	GR 8	Coarse	Right	Zinc Yellow	341037

5/16-24	GR 8	Fine	Right	Plain Finish	341048
5/16-24	GR 8	Fine	Right	Zinc Yellow	341047

3/8-16	GR 8	Coarse	Right	Plain Finish	341058
3/8-16	GR 8	Coarse	Right	Zinc Yellow	341057

3/8-24	GR 8	Fine	Right	Plain Finish	341068
3/8-24	GR 8	Fine	Right	Zinc Clear	341066T
3/8-24	GR 8	Fine	Right	Zinc Yellow	341070

7/16-14	GR 8	Coarse	Right	Plain Finish	341078
7/16-14	GR 8	Coarse	Right	Zinc Yellow	341077

7/16-20	GR 8	Fine	Right	Plain Finish	341088
7/16-20	GR 8	Fine	Right	Zinc Yellow	341087

1/2-13	GR 8	Coarse	Right	Plain Finish	341108
1/2-13	GR 8	Coarse	Right	Phos & Oil	341109
1/2-13	GR 8	Coarse	Right	Zinc Clear	341107T
1/2-13	GR 8	Coarse	Right	Zinc Yellow	341110

1/2-20	GR 8	Fine	Right	Plain Finish	341128
1/2-20	GR 8	Fine	Right	Zinc Clear	341137T
1/2-20	GR 8	Fine	Right	Zinc Yellow	341127
1/2-20	GR 8	Fine	Left	Plain Finish	333128

9/16-12	GR 8	Coarse	Right	Plain Finish	341148
9/16-12	GR 8	Coarse	Right	Zinc Yellow	341147

Grade 8

SIZE	GRADE	PITCH	THREAD DIRECTION	FINISH	PART #
9/16-18	GR 8	Fine	Right	Plain Finish	341168
9/16-18	GR 8	Fine	Right	Zinc Yellow	341170

5/8-11	GR 8	Coarse	Right	Plain Finish	341188
5/8-11	GR 8	Coarse	Right	Zinc Yellow	341187

5/8-18	GR 8	Fine	Right	Plain Finish	341208
5/8-18	GR 8	Fine	Right	Phos & Oil	341209
5/8-18	GR 8	Fine	Right	Zinc Clear	341210T
5/8-18	GR 8	Fine	Right	Zinc Yellow	341207

3/4-10	GR 8	Coarse	Right	Plain Finish	341228
3/4-10	GR 8	Coarse	Right	Zinc Clear	341227T
3/4-10	GR 8	Coarse	Right	Zinc Yellow	341230

3/4-16	GR 8	Fine	Right	Plain Finish	341248
3/4-16	GR 8	Fine	Right	Zinc Clear	341234T
3/4-16	GR 8	Fine	Right	Zinc Yellow	341247

7/8-9	GR 8	Coarse	Right	Plain Finish	341258
7/8-9	GR 8	Coarse	Right	Zinc Clear	341259T
7/8-9	GR 8	Coarse	Right	Zinc Yellow	341257

7/8-14	GR 8	Fine	Right	Plain Finish	341288
7/8-14	GR 8	Fine	Right	Zinc Clear	341269T
7/8-14	GR 8	Fine	Right	Zinc Yellow	341267

1-8	GR 8	Coarse	Right	Plain Finish	341298
1-8	GR 8	Coarse	Right	Zinc Yellow	341297

1-12	GR 8	Fine	Right	Plain Finish	345318
1-12	GR 8	Fine	Right	Zinc Yellow	345317

1-14	GR 8	Extra Fine	Right	Plain Finish	341318
1-14	GR 8	Extra Fine	Right	Zinc Yellow	341317
1-14	GR 8	Extra Fine	Left	Plain Finish	333328

1 1/8-7	GR 8	Coarse	Right	Plain Finish	341338
1 1/8-7	GR 8	Coarse	Right	Zinc Clear	341337T
1 1/8-7	GR 8	Coarse	Right	Zinc Yellow	341330

Hex Jam Nuts - Inch

Grade 8

SIZE	GRADE	PITCH	THREAD DIRECTION	FINISH	PART #
1 1/8-12	GR 8	Fine	Right	Plain Finish	341368
1 1/8-12	GR 8	Fine	Right	Zinc Clear	341369
1 1/8-12	GR 8	Fine	Right	Zinc Yellow	341367

1 1/4-7	GR 8	Coarse	Right	Plain Finish	341388
1 1/4-7	GR 8	Coarse	Right	Zinc Yellow	341387

1 1/4-12	GR 8	Fine	Right	Plain Finish	341408
1 1/4-12	GR 8	Fine	Right	Zinc Clear	341489T
1 1/4-12	GR 8	Fine	Right	Zinc Yellow	341407

1 3/8-6	GR 8	Coarse	Right	Plain Finish	341418
1 3/8-6	GR 8	Coarse	Right	Zinc Yellow	341417

1 3/8-12	GR 8	Fine	Right	Plain Finish	341448
1 3/8-12	GR 8	Fine	Right	Zinc Yellow	341447

1 1/2-6	GR 8	Coarse	Right	Plain Finish	341468
1 1/2-6	GR 8	Coarse	Right	Zinc Yellow	341467

1 1/2-12	GR 8	Fine	Right	Plain Finish	341488
1 1/2-12	GR 8	Fine	Right	Zinc Yellow	341487T
1 1/2-12	GR 8	Fine	Right	Zinc Yellow	341487

1 3/4-5	GR 8	Coarse	Right	Plain Finish	341538
1 3/4-5	GR 8	Coarse	Right	Zinc Yellow	341537

1 3/4-12	GR 8	Fine	Right	Plain Finish	341568
1 3/4-12	GR 8	Fine	Right	Zinc Yellow	341567

2-4 1/2	GR 8	Coarse	Right	Plain Finish	341618
2-4 1/2	GR 8	Coarse	Right	Zinc Yellow	341617

2-12	GR 8	Fine	Right	Plain Finish	341648
2-12	GR 8	Fine	Right	Zinc Yellow	341647

3-12	GR 8	Fine	Right	Plain Finish	341798
3-12	GR 8	Fine	Right	Zinc Clear	341797T

Grade 5

SIZE	GRADE	PITCH	THREAD DIRECTION	FINISH	PART #
1/4-20	GR 5	Coarse	Right	Plain Finish	341015
1/4-20	GR 5	Coarse	Right	Zinc Clear	340014T
1/4-20	GR 5	Coarse	Right	Zinc Yellow	341014
1/4-20	GR 5	Coarse	Left	Plain Finish	333015
1/4-20	GR 5	Coarse	Left	Zinc Clear	333014T

1/4-28	GR 5	Fine	Right	Plain Finish	341025
1/4-28	GR 5	Fine	Right	Zinc Clear	340024T
1/4-28	GR 5	Fine	Right	Zinc Yellow	341002
1/4-28	GR 5	Fine	Left	Plain Finish	333025
1/4-28	GR 5	Fine	Left	Zinc Clear	333024T
1/4-28	GR 5	Fine	Left	Zinc Yellow	333027

5/16-18	GR 5	Coarse	Right	Plain Finish	341035
5/16-18	GR 5	Coarse	Right	Zinc Clear	340034T
5/16-18	GR 5	Coarse	Right	Zinc Yellow	341034
5/16-18	GR 5	Coarse	Left	Plain Finish	333035
5/16-18	GR 5	Coarse	Left	Zinc Clear	333034T

5/16-24	GR 5	Fine	Right	Plain Finish	341045
5/16-24	GR 5	Fine	Right	Zinc Clear	340044T
5/16-24	GR 5	Fine	Right	Zinc Yellow	341044
5/16-24	GR 5	Fine	Left	Plain Finish	333045
5/16-24	GR 5	Fine	Left	Zinc Clear	333044T
5/16-24	GR 5	Fine	Left	Zinc Yellow	333040

3/8-16	GR 5	Coarse	Right	Plain Finish	341055
3/8-16	GR 5	Coarse	Right	Zinc Yellow	341054
3/8-16	GR 5	Coarse	Left	Plain Finish	333055
3/8-16	GR 5	Coarse	Left	Zinc Clear	333058T
3/8-16	GR 5	Coarse	Left	Zinc Yellow	333054

3/8-24	GR 5	Fine	Right	Plain Finish	341065
3/8-24	GR 5	Fine	Right	Zinc Clear	340064T
3/8-24	GR 5	Fine	Right	Zinc Yellow	341060
3/8-24	GR 5	Fine	Left	Plain Finish	333065
3/8-24	GR 5	Fine	Left	Zinc Clear	333067T
3/8-24	GR 5	Fine	Left	Zinc Yellow	333064

Hex Jam Nuts - Inch

Grade 5

SIZE	GRADE	PITCH	THREAD DIRECTION	FINISH	PART #
7/16-14	GR 5	Coarse	Right	Plain Finish	341075
7/16-14	GR 5	Coarse	Right	Zinc Clear	341074T
7/16-14	GR 5	Coarse	Right	Zinc Yellow	341081
7/16-14	GR 5	Coarse	Left	Plain Finish	333075
7/16-14	GR 5	Coarse	Left	Zinc Clear	333074T

7/16-20	GR 5	Fine	Right	Plain Finish	341085
7/16-20	GR 5	Fine	Right	Zinc Clear	340084T
7/16-20	GR 5	Fine	Right	Zinc Yellow	341090
7/16-20	GR 5	Fine	Left	Plain Finish	333085
7/16-20	GR 5	Fine	Left	Zinc Clear	333084T
7/16-20	GR 5	Fine	Left	Zinc Yellow	333083

1/2-13	GR 5	Coarse	Right	Plain Finish	341105
1/2-13	GR 5	Coarse	Right	Phos & Oil	341104
1/2-13	GR 5	Coarse	Right	Zinc Clear	340104T
1/2-13	GR 5	Coarse	Right	Zinc Yellow	341100
1/2-13	GR 5	Coarse	Left	Plain Finish	333105
1/2-13	GR 5	Coarse	Left	Zinc Clear	333107T
1/2-13	GR 5	Coarse	Left	Zinc Yellow	333104

1/2-20	GR 5	Fine	Right	Plain Finish	341125
1/2-20	GR 5	Fine	Right	Zinc Yellow	341124
1/2-20	GR 5	Fine	Right	Zinc Clear	340124T
1/2-20	GR 5	Fine	Left	Plain Finish	333125
1/2-20	GR 5	Fine	Left	Zinc Clear	333124T
1/2-20	GR 5	Fine	Left	Zinc Yellow	333130

9/16-12	GR 5	Coarse	Right	Plain Finish	341145
9/16-12	GR 5	Coarse	Right	Zinc Clear	340144T
9/16-12	GR 5	Coarse	Left	Plain Finish	333145
9/16-12	GR 5	Coarse	Left	Zinc Clear	333144

9/16-18	GR 5	Fine	Right	Plain Finish	341165
9/16-18	GR 5	Fine	Right	Zinc Clear	340164T
9/16-18	GR 5	Fine	Right	Zinc Yellow	341160
9/16-18	GR 5	Fine	Left	Plain Finish	333165
9/16-18	GR 5	Fine	Left	Zinc Clear	333164T
9/16-18	GR 5	Fine	Left	Zinc Yellow	333154

Grade 5

SIZE	GRADE	PITCH	THREAD DIRECTION	FINISH	PART #
5/8-11	GR 5	Coarse	Right	Plain Finish	341185
5/8-11	GR 5	Coarse	Right	Zinc Clear	340184T
5/8-11	GR 5	Coarse	Right	Zinc Yellow	341180
5/8-11	GR 5	Coarse	Left	Plain Finish	333185
5/8-11	GR 5	Coarse	Left	Zinc Yellow	333187
5/8-11	GR 5	Coarse	Left	Zinc Clear	333184T

5/8-18	GR 5	Fine	Right	Plain Finish	341205
5/8-18	GR 5	Fine	Right	Zinc Clear	341200T
5/8-18	GR 5	Fine	Right	Zinc Yellow	341204
5/8-18	GR 5	Fine	Left	Plain Finish	333205
5/8-18	GR 5	Fine	Left	Zinc Clear	333204T
5/8-18	GR 5	Fine	Left	Zinc Yellow	333200

3/4-10	GR 5	Coarse	Right	Plain Finish	341225
3/4-10	GR 5	Coarse	Right	Zinc Clear	340224T
3/4-10	GR 5	Coarse	Right	Zinc Yellow	341224
3/4-10	GR 5	Coarse	Left	Plain Finish	333225
3/4-10	GR 5	Coarse	Left	Zinc Clear	333227T
3/4-10	GR 5	Coarse	Left	Zinc Yellow	333224

3/4-16	GR 5	Fine	Right	Plain Finish	341245
3/4-16	GR 5	Fine	Right	Zinc Clear	340244T
3/4-16	GR 5	Fine	Right	Zinc Yellow	341240
3/4-16	GR 5	Fine	Left	Plain Finish	333245
3/4-16	GR 5	Fine	Left	Zinc Clear	333247T
3/4-16	GR 5	Fine	Left	Zinc Yellow	333249

7/8-9	GR 5	Coarse	Right	Plain Finish	341255
7/8-9	GR 5	Coarse	Right	Zinc Clear	341254T
7/8-9	GR 5	Coarse	Right	Zinc Yellow	341250
7/8-9	GR 5	Coarse	Left	Plain Finish	333265
7/8-9	GR 5	Coarse	Left	Zinc Clear	333266T

7/8-14	GR 5	Fine	Right	Plain Finish	341285
7/8-14	GR 5	Fine	Right	Phos & Oil	341286
7/8-14	GR 5	Fine	Right	Zinc Clear	340284T
7/8-14	GR 5	Fine	Right	Zinc Yellow	341264
7/8-14	GR 5	Fine	Left	Plain Finish	341262
7/8-14	GR 5	Fine	Left	Zinc Clear	333284T
7/8-14	GR 5	Fine	Left	Zinc Yellow	333286

Hex Jam Nuts - Inch

Grade 5

SIZE	GRADE	PITCH	THREAD DIRECTION	FINISH	PART #
1-8	GR 5	Coarse	Right	Plain Finish	341295
1-8	GR 5	Coarse	Right	Zinc Clear	341294T
1-8	GR 5	Coarse	Right	Zinc Yellow	341303
1-8	GR 5	Coarse	Left	Plain Finish	333305
1-8	GR 5	Coarse	Left	Zinc Clear	333304T
1-8	GR 5	Coarse	Left	Zinc Yellow	333303

1-12	GR 5	Fine	Right	Plain Finish	345315
1-12	GR 5	Fine	Right	Zinc Clear	345314T
1-12	GR 5	Fine	Right	Zinc Yellow	345316

1-14	GR 5	Extra Fine	Right	Plain Finish	341315
1-14	GR 5	Extra Fine	Right	Zinc Clear	340314T
1-14	GR 5	Extra Fine	Right	Zinc Yellow	341310
1-14	GR 5	Extra Fine	Left	Plain Finish	333325
1-14	GR 5	Extra Fine	Left	Zinc Clear	333324T
1-14	GR 5	Extra Fine	Left	Zinc Yellow	333323

1-16	GR 5	Extra Fine	Right	Zinc Clear	341329T
1-16	GR 5	Extra Fine	Left	Zinc Clear	333329T

1-20	GR 5	Extra Fine	Right	Zinc Yellow	341324
------	------	------------	-------	-------------	--------

1 1/8-7	GR 5	Coarse	Right	Plain Finish	341335
1 1/8-7	GR 5	Coarse	Right	Zinc Clear	340334T
1 1/8-7	GR 5	Coarse	Right	Zinc Yellow	340332
1 1/8-7	GR 5	Coarse	Left	Plain Finish	333345
1 1/8-7	GR 5	Coarse	Left	Zinc Clear	333344T
1 1/8-7	GR 5	Coarse	Left	Zinc Yellow	333346

1 1/8-12	GR 5	Fine	Right	Plain Finish	341365
1 1/8-12	GR 5	Fine	Right	Zinc Clear	340364T
1 1/8-12	GR 5	Fine	Right	Zinc Yellow	341354
1 1/8-12	GR 5	Fine	Left	Plain Finish	333365
1 1/8-12	GR 5	Fine	Left	Zinc Clear	333366T
1 1/8-12	GR 5	Fine	Left	Zinc Yellow	333364

1 1/8-18	GR 5	Extra Fine	Right	Zinc Yellow	340373
----------	------	------------	-------	-------------	--------

Grade 5

SIZE	GRADE	PITCH	THREAD DIRECTION	FINISH	PART #
1 1/4-7	GR 5	Coarse	Right	Plain Finish	341375
1 1/4-7	GR 5	Coarse	Right	Zinc Clear	341374T
1 1/4-7	GR 5	Coarse	Right	Zinc Yellow	341384
1 1/4-7	GR 5	Coarse	Left	Plain Finish	333385
1 1/4-7	GR 5	Coarse	Left	Zinc Clear	333384T

1 1/4-12	GR 5	Fine	Right	Plain Finish	341405
1 1/4-12	GR 5	Fine	Right	Zinc Clear	340404T
1 1/4-12	GR 5	Fine	Right	Zinc Yellow	341400
1 1/4-12	GR 5	Fine	Left	Plain Finish	333405
1 1/4-12	GR 5	Fine	Left	Zinc Clear	333404T
1 1/4-12	GR 5	Fine	Left	Zinc Yellow	341399

1 3/8-6	GR 5	Coarse	Right	Plain Finish	341415
1 3/8-6	GR 5	Coarse	Right	Zinc Clear	341414T
1 3/8-6	GR 5	Coarse	Left	Plain Finish	333415
1 3/8-6	GR 5	Coarse	Left	Zinc Clear	333414T

1 3/8-12	GR 5	Fine	Right	Plain Finish	341445
1 3/8-12	GR 5	Fine	Right	Zinc Clear	341444T
1 3/8-12	GR 5	Fine	Right	Zinc Yellow	341440
1 3/8-12	GR 5	Fine	Left	Plain Finish	333445
1 3/8-12	GR 5	Fine	Left	Zinc Clear	333444
1 3/8-12	GR 5	Fine	Left	Zinc Yellow	333443

1 1/2-6	GR 5	Coarse	Right	Plain Finish	341465
1 1/2-6	GR 5	Coarse	Right	Zinc Clear	341464T
1 1/2-6	GR 5	Coarse	Right	Zinc Yellow	341460
1 1/2-6	GR 5	Coarse	Left	Plain Finish	333465
1 1/2-6	GR 5	Coarse	Left	Zinc Clear	333464T

1 1/2-12	GR 5	Fine	Right	Plain Finish	341485
1 1/2-12	GR 5	Fine	Right	Zinc Clear	341484T
1 1/2-12	GR 5	Fine	Right	Zinc Yellow	341480
1 1/2-12	GR 5	Fine	Left	Plain Finish	333485
1 1/2-12	GR 5	Fine	Left	Zinc Clear	333484T
1 1/2-12	GR 5	Fine	Left	Zinc Yellow	333486

1 5/8-5 1/2	GR 5	Coarse	Right	Plain Finish	341505
-------------	------	--------	-------	--------------	--------

Hex Jam Nuts - Inch

Grade 5

SIZE	GRADE	PITCH	THREAD DIRECTION	FINISH	PART #
1 5/8-12	GR 5	Fine	Right	Plain Finish	341525

1 3/4-5	GR 5	Coarse	Right	Plain Finish	341535
1 3/4-5	GR 5	Coarse	Right	Zinc Clear	341534T
1 3/4-5	GR 5	Coarse	Right	Zinc Yellow	341536
1 3/4-5	GR 5	Coarse	Left	Plain Finish	333545
1 3/4-5	GR 5	Coarse	Left	Zinc Yellow	333546

1 3/4-12	GR 5	Fine	Right	Plain Finish	341565
1 3/4-12	GR 5	Fine	Left	Plain Finish	333565

1 7/8-5	GR 5	Coarse	Right	Plain Finish	341585
---------	------	--------	-------	--------------	--------

1 7/8-12	GR 5	Fine	Right	Plain Finish	341605
1 7/8-12	GR 5	Fine	Right	Zinc Clear	341604T

2-4 1/2	GR 5	Coarse	Right	Plain Finish	341615
2-4 1/2	GR 5	Coarse	Right	Zinc Clear	341614T
2-4 1/2	GR 5	Coarse	Left	Plain Finish	333625

2-12	GR 5	Fine	Right	Plain Finish	341645
2-12	GR 5	Fine	Right	Zinc Clear	341644T
2-12	GR 5	Fine	Right	Zinc Yellow	341634
2-12	GR 5	Fine	Left	Plain Finish	333645
2-12	GR 5	Fine	Left	Zinc Clear	333644T

Grade 2/Grade A

SIZE	GRADE	PITCH	THREAD DIRECTION	FINISH	PART #
1/4-20	GR 2/GR A	Coarse	Right	Plain Finish	341012
1/4-20	GR 2/GR A	Coarse	Right	Zinc Clear	340011
1/4-20	GR 2/GR A	Coarse	Left	Plain Finish	333012
1/4-20	GR 2/GR A	Coarse	Left	Zinc Clear	333011T

1/4-28	GR 2/GR A	Fine	Right	Plain Finish	341022
1/4-28	GR 2/GR A	Fine	Right	Zinc Yellow	341020
1/4-28	GR 2/GR A	Fine	Left	Plain Finish	333022

5/16-18	GR 2/GR A	Coarse	Right	Plain Finish	341032
5/16-18	GR 2/GR A	Coarse	Left	Plain Finish	333032
5/16-18	GR 2/GR A	Coarse	Left	Zinc Clear	333031T

Grade 2/Grade A

SIZE	GRADE	PITCH	THREAD DIRECTION	FINISH	PART #
5/16-24	GR 2/GR A	Fine	Right	Plain Finish	341042
5/16-24	GR 2/GR A	Fine	Right	Zinc Clear	340041T
5/16-24	GR 2/GR A	Fine	Right	Zinc Yellow	341041

3/8-16	GR 2/GR A	Coarse	Right	Plain Finish	341052
3/8-16	GR 2/GR A	Coarse	Right	Zinc Clear	340051

3/8-24	GR 2/GR A	Fine	Right	Plain Finish	341062
3/8-24	GR 2/GR A	Fine	Right	Zinc Clear	340061T
3/8-24	GR 2/GR A	Fine	Left	Zinc Yellow	333059

7/16-14	GR 2/GR A	Coarse	Right	Plain Finish	341072
7/16-14	GR 2/GR A	Coarse	Right	Zinc Clear	341080

7/16-20	GR 2/GR A	Fine	Right	Plain Finish	341082
7/16-20	GR 2/GR A	Fine	Right	Zinc Clear	340081T

1/2-13	GR 2/GR A	Coarse	Right	Plain Finish	341102
1/2-13	GR 2/GR A	Coarse	Right	Zinc Clear	341101T

1/2-20	GR 2/GR A	Fine	Right	Plain Finish	341122
1/2-20	GR 2/GR A	Fine	Right	Zinc Clear	341121T

9/16-12	GR 2/GR A	Coarse	Right	Plain Finish	341142
9/16-12	GR 2/GR A	Coarse	Right	Zinc Clear	341140T

9/16-18	GR 2/GR A	Fine	Right	Plain Finish	341162
9/16-18	GR 2/GR A	Fine	Right	Zinc Yellow	341161
9/16-18	GR 2/GR A	Fine	Left	Plain Finish	333162

5/8-11	GR 2/GR A	Coarse	Right	Plain Finish	341182
5/8-11	GR 2/GR A	Coarse	Right	Zinc Clear	341181T

5/8-18	GR 2/GR A	Fine	Right	Plain Finish	341202
5/8-18	GR 2/GR A	Fine	Right	Zinc Clear	341191T
5/8-18	GR 2/GR A	Fine	Right	Zinc Yellow	341199

3/4-10	GR 2/GR A	Coarse	Right	Plain Finish	341222
3/4-10	GR 2/GR A	Coarse	Right	Zinc Clear	341221T

3/4-16	GR 2/GR A	Fine	Right	Plain Finish	341242
3/4-16	GR 2/GR A	Fine	Right	Zinc Clear	341241T

Hex Jam Nuts - Inch

Grade 2/Grade A

SIZE	GRADE	PITCH	THREAD DIRECTION	FINISH	PART #
7/8-14	GR 2/GR A	Fine	Right	Plain Finish	341282
7/8-14	GR 2/GR A	Fine	Right	Zinc Yellow	341262

1-8	GR 2/GR A	Coarse	Right	Plain Finish	341292
-----	-----------	--------	-------	--------------	--------

1-14	GR 2/GR A	Extra Fine	Right	Plain Finish	341312
------	-----------	------------	-------	--------------	--------

1 1/8-12	GR 2/GR A	Fine	Right	Plain Finish	341362
----------	-----------	------	-------	--------------	--------

1 1/4-7	GR 2/GR A	Coarse	Right	Plain Finish	341382
---------	-----------	--------	-------	--------------	--------

1 1/4-7	GR 2/GR A	Coarse	Right	Zinc Yellow	341380
---------	-----------	--------	-------	-------------	--------

1 1/4-12	GR 2/GR A	Fine	Right	Plain Finish	341402
----------	-----------	------	-------	--------------	--------

1 1/4-12	GR 2/GR A	Fine	Right	Zinc Clear	341401T
----------	-----------	------	-------	------------	---------

1 1/4-12	GR 2/GR A	Fine	Left	Plain Finish	333402
----------	-----------	------	------	--------------	--------

1 3/8-6	GR 2/GR A	Coarse	Right	Plain Finish	341412
---------	-----------	--------	-------	--------------	--------

1 3/8-6	GR 2/GR A	Coarse	Left	Plain Finish	333412
---------	-----------	--------	------	--------------	--------

1 3/8-12	GR 2/GR A	Fine	Right	Plain Finish	341442
----------	-----------	------	-------	--------------	--------

1 3/8-12	GR 2/GR A	Fine	Left	Plain Finish	333442
----------	-----------	------	------	--------------	--------

1 1/2-6	GR 2/GR A	Coarse	Right	Plain Finish	341462
---------	-----------	--------	-------	--------------	--------

1 1/2-6	GR 2/GR A	Coarse	Right	Zinc Clear	341462T
---------	-----------	--------	-------	------------	---------

1 1/2-6	GR 2/GR A	Coarse	Left	Plain Finish	333462
---------	-----------	--------	------	--------------	--------

1 1/2-12	GR 2/GR A	Fine	Right	Plain Finish	341482
----------	-----------	------	-------	--------------	--------

1 1/2-12	GR 2/GR A	Fine	Right	Zinc Clear	341481T
----------	-----------	------	-------	------------	---------

1 1/2-12	GR 2/GR A	Fine	Left	Plain Finish	333482
----------	-----------	------	------	--------------	--------

1 5/8-12	GR 2/GR A	Fine	Right	Plain Finish	341522
----------	-----------	------	-------	--------------	--------

1 3/4-5	GR 2/GR A	Coarse	Right	Plain Finish	341532
---------	-----------	--------	-------	--------------	--------

1 3/4-12	GR 2/GR A	Fine	Right	Plain Finish	341562
----------	-----------	------	-------	--------------	--------

1 3/4-12	GR 2/GR A	Fine	Right	Zinc Clear	341561T
----------	-----------	------	-------	------------	---------

1 7/8-5	GR 2/GR A	Coarse	Right	Plain Finish	341582
---------	-----------	--------	-------	--------------	--------

1 7/8-12	GR 2/GR A	Fine	Right	Plain Finish	341602
----------	-----------	------	-------	--------------	--------

1 7/8-12	GR 2/GR A	Fine	Right	Zinc Clear	341601T
----------	-----------	------	-------	------------	---------

Grade 2/Grade A

SIZE	GRADE	PITCH	THREAD DIRECTION	FINISH	PART #
2 1/4-12	GR 2/GR A	Fine	Right	Plain Finish	341672
2 1/2-4	GR 2/GR A	Coarse	Right	Plain Finish	341692
2 1/2-12	GR 2/GR A	Fine	Right	Plain Finish	341712
2-4 1/2	GR 2/GR A	Coarse	Right	Plain Finish	341612
2-12	GR 2/GR A	Fine	Right	Plain Finish	341642
2 1/4-12	GR 2/GR A	Fine	Right	Plain Finish	341672
2 1/2-12	GR 2/GR A	Fine	Right	Plain Finish	341712

3-4	GR 2/GR A	Coarse	Right	Plain Finish	341772
-----	-----------	--------	-------	--------------	--------

3-12	GR 2/GR A	Fine	Right	Plain Finish	341792
------	-----------	------	-------	--------------	--------

Stainless Steel

SIZE	GRADE	PITCH	THREAD DIRECTION	FINISH	PART #
1/2-20	18/8	Fine	Right	Passivated	341112
5/8-18	18/8	Fine	Right	Passivated	341219
3/4-16	18/8	Fine	Right	Passivated	340240

Hex Jam Nuts - Metric

Metric Class 04

SIZE	SPEC	CLASS	PITCH	THREAD DIRECTION	FINISH	PART #
M5-0.8	439-2	Class 04	Coarse	Right	Zinc Clear	475524T

M6-1.0	439-2	Class 04	Coarse	Right	Zinc Clear	475518T
M6-1.0	439-2	Class 04	Coarse	Right	Zinc Clear	475528T

M8-1.25	439-2	Class 04	Coarse	Right	Plain Finish	475145
M8-1.25	439-2	Class 04	Coarse	Right	Zinc Yellow	475146
M8-1.25	439-2	Class 04	Coarse	Left	Plain Finish	475147
M8-1.25	439-2	Class 04	Coarse	Left	Zinc Yellow	475148

M12-1.75	439-2	Class 04	Coarse	Right	Plain Finish	475505
----------	-------	----------	--------	-------	--------------	--------

M14-2.0	4035	Class 04	Coarse	Right	Zinc Clear	475604T
---------	------	----------	--------	-------	------------	---------

M16-2.0	439-2	Class 04	Coarse	Left	Zinc Clear	485002
---------	-------	----------	--------	------	------------	--------

Metric Class 05

SIZE	SPEC	CLASS	PITCH	THREAD DIRECTION	FINISH	PART #
M6-1.0	439-2	Class 05	Coarse	Right	Plain Finish	475525

M12-1.75	4035	Class 05	Coarse	Right	Zinc Clear	991002T
----------	------	----------	--------	-------	------------	---------

M18-1.5	439-2	Class 05	Coarse	Right	Plain Finish	427258
M18-1.5	439-2	Class 05	Coarse	Right	Zinc Clear	427257

M24-2.0	439-2	Class 05	Coarse	Right	Plain Finish	732620
---------	-------	----------	--------	-------	--------------	--------