

## Hex Coupling Nuts



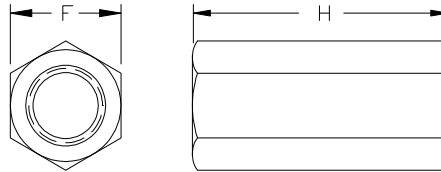
Earnest Machine Products line of hex coupling nuts are made from carbon steel and are designed for use with threaded rod or studs. Hex coupling nuts are used to attach two lengths of rod together to form a long secure thread length.

- 1.) **Threads:** Threads are to the requirements of ANSI B1.1 Unified Threads, 2B Fit. Thread acceptance is based on ANSI B1.3, System 21.
- 2.) **Material and Physical Properties:** These nuts are made from grade 2 or grade A material as specified by SAE J995 or ASTM A563.

Carbon (C)	Manganese (Mn)	Phosphorus (P)	Sulfur (S)
Max	Min	Max	Max
0.55	0.30	0.05	0.15

Hardness: Rc 32 max

- 4.) **Plating:** Zinc with Clear Chromate (Reference ASTM B633 Type III SC1 or ASTM F1941)  
Nominal plating thickness - .0002" (5 micron)  
Other platings and coatings available upon request.



Coarse (UNC) Thread					Fine (UNF) Thread				
Size	F Width Across Flats			H Thickness	Size	F Width Across Flats			H Thickness
	nom	max	min	+/- .025		nom	max	min	+/- .025
1/4 – 20	3/8	.375	.362	7/8	1/4 – 28	3/8	.375	.362	7/8
5/16 – 18	1/2	.500	.489	1 1/8	5/16 – 24	7/16	.438	.428	7/8
3/8 – 16	1/2	.500	.489	1 1/8	3/8 – 24	1/2	.500	.489	1 1/8
7/16 – 14	5/8	.625	.606	1 3/4	7/16 – 20	5/8	.625	.606	1 1/4
1/2 – 13	11/16	.688	.675	1 3/4	1/2 – 20	5/8	.625	.606	1 1/4
9/16 – 14	13/16	.813	.788	2 1/8	9/16 – 18	13/16	.813	.788	2 1/8
5/8 – 11	13/16	.813	.788	2 1/8	5/8 – 18	13/16	.813	.788	2 1/8
3/4 – 10	1	1.000	.969	2 1/4	3/4 – 16	1	1.000	.969	2 1/4
7/8 – 9	1 1/4	1.250	1.212	2 1/2	7/8 – 14	1 1/4	1.250	1.212	2 1/2
1 – 8	1 3/8	1.375	1.331	2 3/4	1 – 14	1 3/8	1.375	1.331	2 3/4
1 1/4 – 7	1 5/8	1.625	1.575	3					
1 1/2 – 6	2	2.000	1.938	3 1/2					