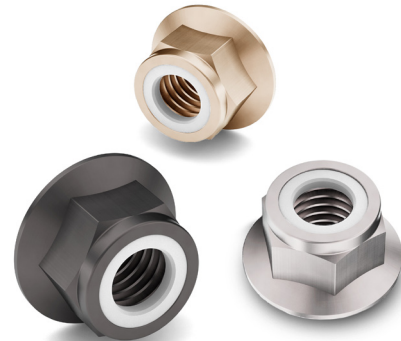




Nylon Insert Hex Flange Lock Nuts

Vibration resistant for a more secure assembly.

Nylon Insert Hex Flange Lock Nuts are designed to compress around the threads of a mating fastener – providing a full 360° of locking action and a dampening effect when subjected to vibration. Offering a built-in washer that distributes the clamping load over a wider area, Nylon Insert Hex Flange Lock Nuts provide maximum locking force in your assembly.



PRODUCT ATTRIBUTES

Nylon is resistant to temperatures up to 250° F
Built-in washer distributes clamping load over wider area
Replaces traditional nylon insert nut & washer applications
Sizes range from #10 to 3/4" and M6 to M12

MARKETS FOR NYLON INSERT HEX FLANGE LOCK NUTS

Agriculture Equipment
Commercial Lawn Equipment
Robotics & Automation
Automotive

THIS PRODUCT IS OFTEN CALLED...

Nylock Flange Lock Nut
Non-Metallic Insert Flange Lock Nut
Flanged Stop Nut
Prevailing Torque Nylon Insert Lock Nut

AVAILABLE VALUE ADDED SERVICES

Bulk, full & broken case quantities
Secondary & rework services available
Custom packaging services
Custom plating

ADDITIONAL HEX FLANGE PRODUCT WE SUPPLY

Hex Flange Lag Screws
Hex Flange Screws
Metric & JIS Hex Flange Screws
Metric Stainless Steel Hex Flange Screws
Hex Serrated Flange Screws
Large Flange Hex Serrated Flange Screws
Stainless Steel Hex Serrated Flange Screws
Metric Hex Serrated Flange Screws
Hex Flange Nuts
Metric & JIS Hex Flange Nuts
Metric Stainless Steel Hex Flange Nuts
Hex Serrated Flange Lock Nuts
Large Flange Hex Serrated Flange Lock Nuts
Stainless Steel Hex Serrated Flange Lock Nuts
Metric & JIS Hex Serrated Flange Lock Nuts
All Metal Hex Flange Lock Nuts
Metric All Metal Hex Flange Lock Nuts

BACKED BY THE EARNEST
Service
GUARANTEE

**The right part.
The right quantity.
On-time.
Everytime.**

GRADE 8 (GRADE G) & GRADE F (GRADE 5) NYLON INSERT HEX FLANGE LOCK NUTS

Nylon Insert Hex Flange Lock Nuts are manufactured in accordance with the latest revision of the following industry standards:

- ASME B18.16.6** Dimensional Requirements
- SAE J995** Material and Physical Properties
- ASME B1.1** Thread Requirements
- ASTM F812** Surface Discontinuities
- ASME B18.18** Inspection and Quality Assurance

THREADS

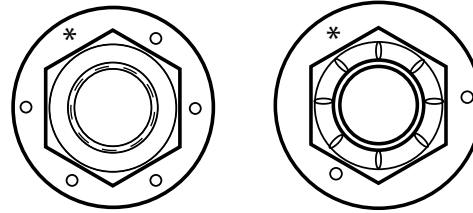
Threads are made to the requirements of ASME B1.1 Unified Threads (UNC) Class 2B
Thread acceptance per ASME B1.3, System 21

PLATING

| GRADE 8 | GRADE F |
|-------------|-------------------|
| Zinc Yellow | n/a |
| n/a | Zinc Clear (Cr+3) |

MATERIAL AND PHYSICAL PROPERTIES

Grade 8 (Grade G) Grade F (Grade 5)



Chemical Composition:

| GRADE | CARBON (C) | MANGANESE (Mn) | PHOSPHORUS (P) | SULFUR (S) |
|-------|------------|----------------|----------------|------------|
| | Max | Min | Max | Max |
| 8 | 0.55 | 0.30 | 0.04 | .005 |
| F | 0.55 | 0.30 | 0.05 | 0.15 |

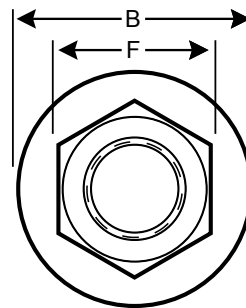
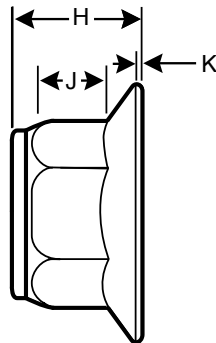
Hardness

| SAE J995 GRADE 8 | SAE J995 GRADE F |
|------------------|------------------|
| HRC 24/36 | HRC 32 max |

Proof Load Strength

| SAE J995 GRADE 8 | SAE J995 GRADE F |
|------------------|------------------|
| 150,000 psi min | 120,000 psi min |

DIMENSIONS FOR GRADE 8 (GRADE G) & GRADE F (GRADE 5) NYLON INSERT HEX FLANGE LOCK NUTS



| SIZE | GRADE | WIDTH ACROSS FLATS (F) | | FLANGE DIAMETER (B) | NUT THICKNESS (H) | | WRENCH HEIGHT (J) | FLANGE THICKNESS (K) |
|------|-------|------------------------|-------|---------------------|-------------------|-------|-------------------|----------------------|
| | | MAX | MIN | MAX | MAX | MIN | MAX | MIN |
| 1/4 | 8 & F | 0.438 | 0.428 | 0.560 | 0.300 | 0.265 | 0.140 | 0.040 |
| 5/16 | 8 & F | 0.502 | 0.489 | 0.680 | 0.365 | 0.320 | 0.170 | 0.050 |
| 3/8 | 8 & F | 0.565 | 0.551 | 0.810 | 0.425 | 0.404 | 0.200 | 0.060 |
| 1/2 | 8 & F | 0.752 | 0.736 | 1.070 | 0.555 | 0.528 | 0.260 | 0.080 |
| 5/8 | 8 & F | 0.940 | 0.922 | 1.330 | 0.690 | 0.646 | 0.320 | 0.100 |
| 3/4 | 8 | 1.127 | 1.088 | 1.585 | 0.825 | 0.742 | .380 | 0.110 |

*The specifications shown on this sheet are not intended to be used in the production of parts. Earnest Machine is not responsible or liable in any manner for any production errors and we certify the information present on this specification sheet is correct to the best of our knowledge. ©2021 Earnest Machine Products

CARBON STEEL (GRADE A & GRADE 2) NYLON INSERT HEX FLANGE LOCK NUTS

Nylon Insert Hex Flange Lock Nuts are manufactured in accordance with the latest revision of the following industry standards:

ASME B18.16.6 Dimensional Requirements

SAE J995 Material

ASME B1.1 Thread Requirements

ASTM F812 Surface Discontinuities

ASME B18.18 Inspection and Quality Assurance

THREADS

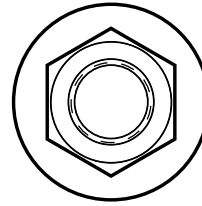
Threads are made to the requirements of ASME B1.1 Unified Threads (UNC and UNF) Class 2B
Thread acceptance per ASME B1.3, System 21

PLATING

Zinc Clear Cr+3

MATERIAL AND PHYSICAL PROPERTIES

Carbon Steel (Grade A & Grade 2)



Chemical Composition:

| CARBON (C) | PHOSPHORUS (P) | SULFUR (S) |
|------------|----------------|------------|
| Max | Max | Max |
| 0.55 | 0.12 | 0.19 |

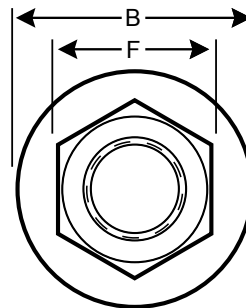
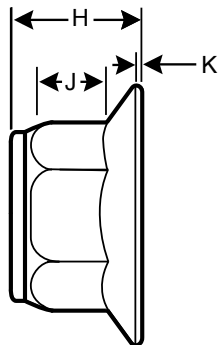
Hardness

| SAE J995 GRADE 2 |
|------------------|
| HRC 32 max |

Proof Load Strength

| SAE J995 GRADE 2 |
|------------------|
| 90,000 psi min |

DIMENSIONS FOR CARBON STEEL (GRADE A & GRADE 2) NYLON INSERT HEX FLANGE LOCK NUTS



| SIZE | WIDTH ACROSS FLATS (F) | | FLANGE DIAMETER (B) | NUT THICKNESS (H) | | WRENCH HEIGHT (J) | FLANGE THICKNESS (K) |
|------|------------------------|-------|---------------------|-------------------|-------|-------------------|----------------------|
| | MAX | MIN | MAX | MAX | MIN | MAX | MIN |
| #10 | 0.375 | 0.365 | 0.500 | 0.264 | 0.230 | 0.130 | 0.030 |
| 1/4 | 0.438 | 0.428 | 0.560 | 0.300 | 0.265 | 0.140 | 0.040 |
| 5/16 | 0.502 | 0.489 | 0.680 | 0.365 | 0.320 | 0.170 | 0.050 |
| 3/8 | 0.565 | 0.551 | 0.810 | 0.425 | 0.404 | 0.200 | 0.060 |
| 1/2 | 0.752 | 0.736 | 1.070 | 0.555 | 0.528 | 0.260 | 0.080 |
| 5/8 | 0.940 | 0.922 | 1.330 | 0.690 | 0.646 | 0.320 | 0.100 |
| 3/4 | 1.127 | 1.088 | 1.585 | 0.825 | 0.742 | 0.380 | 0.110 |

*The specifications shown on this sheet are not intended to be used in the production of parts. Earnest Machine is not responsible or liable in any manner for any production errors and we certify the information present on this specification sheet is correct to the best of our knowledge. ©2021 Earnest Machine Products

METRIC CLASS 10 NYLON INSERT HEX FLANGE LOCK NUTS

Nylon Insert Hex Flange Lock Nuts are manufactured in accordance with the latest revision of the following industry standards:

- DIN 6926** Dimensional Requirements
- ISO 898-2** Material and Physical Properties
- ISO 261** Thread Requirements
- ISO 6157-2** Surface Discontinuities
- ISO 3269** Inspection and Quality Assurance

THREADS

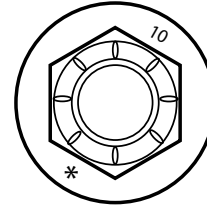
Threads are made to the requirements of ISO 261
ISO 965-2 Class 6H
Thread acceptance per ISO 1502

PLATING

Zinc Clear (Cr3+)
Zinc Yellow

MATERIAL AND PHYSICAL PROPERTIES

Property Class 10



Chemical Composition:

| CARBON (C) | MANGANESE (Mn) | PHOSPHORUS (P) | SULFUR (S) |
|------------|----------------|----------------|------------|
| Max | Min | Max | Max |
| 0.58 | 0.30 | 0.048 | 0.058 |

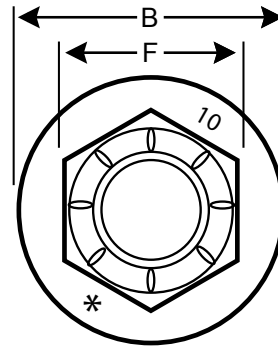
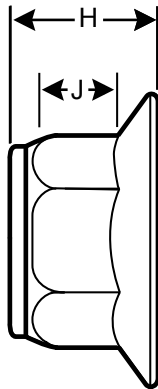
Hardness

| ISO 898-2 CLASS 10 |
|--------------------|
| HRC 26/36 |

Proof Load Strength

| ISO 898-2 CLASS 10 |
|--------------------|
| 1040 MPa min |

DIMENSIONS FOR METRIC CLASS 10 NYLON INSERT HEX FLANGE LOCK NUTS



| SIZE | WIDTH ACROSS FLATS (F) | | FLANGE DIAMETER (B) | NUT THICKNESS (H) | | WRENCH HEIGHT (J) | FLANGE THICKNESS (K) |
|------|------------------------|-------|---------------------|-------------------|-------|-------------------|----------------------|
| | MAX | MIN | MAX | MAX | MIN | MAX | MIN |
| M6 | 10.0 | 9.78 | 14.2 | 9.1 | 8.74 | 3.1 | 1.1 |
| M8 | 13.0 | 12.73 | 17.9 | 11.1 | 10.67 | 4.5 | 1.2 |
| M10 | 15.0 | 14.73 | 21.8 | 13.5 | 13.07 | 5.5 | 1.5 |
| M12 | 18.0 | 17.73 | 26.0 | 16.1 | 15.57 | 6.8 | 1.8 |
| M16 | 24.0 | 23.67 | 34.5 | 20.3 | 19.46 | 9.0 | 2.4 |

*The specifications shown on this sheet are not intended to be used in the production of parts. Earnest Machine is not responsible or liable in any manner for any production errors and we certify the information present on this specification sheet is correct to the best of our knowledge. ©2021 Earnest Machine Products

Nylon Insert Hex Flange Lock Nuts - Inch

Grade 8

| SIZE | GRADE | PITCH | FINISH | PART # |
|---------|-------|--------|-------------|---------|
| 1/4-20 | GR 8 | Coarse | Zinc Yellow | 367345 |
| 1/4-20 | GR 8 | Coarse | Zinc Yellow | 367345T |
| 5/16-18 | GR 8 | Coarse | Zinc Yellow | 367348 |
| 3/8-16 | GR 8 | Coarse | Zinc Yellow | 367351 |
| 1/2-13 | GR 8 | Coarse | Zinc Yellow | 367356 |
| 5/8-11 | GR 8 | Coarse | Zinc Yellow | 367361 |
| 3/4-10 | GR 8 | Coarse | Zinc Yellow | 367364 |

Grade F

| SIZE | GRADE | PITCH | FINISH | PART # |
|---------|-------|--------|------------|---------|
| 1/4-20 | GR F | Coarse | Zinc Clear | 367343T |
| 5/16-18 | GR F | Coarse | Zinc Clear | 367349 |
| 3/8-16 | GR F | Coarse | Zinc Clear | 367354T |
| 3/8-16 | GR F | Coarse | Zinc Clear | 367352 |
| 1/2-13 | GR F | Coarse | Zinc Clear | 367104T |
| 5/8-11 | GR F | Coarse | Zinc Clear | 367106T |

Grade A

| SIZE | GRADE | PITCH | FINISH | PART # |
|--------|-------|--------|------------|--------|
| #10-24 | GR A | Coarse | Zinc Clear | 367340 |

| | | | | |
|--------|------|------|------------|---------|
| #10-32 | GR A | Fine | Zinc Clear | 367342T |
|--------|------|------|------------|---------|

| | | | | |
|---------|------|--------|------------|---------|
| 1/4-20 | GR A | Coarse | Zinc Clear | 367344T |
| 5/16-18 | GR A | Coarse | Zinc Clear | 367347T |
| 3/8-16 | GR A | Coarse | Zinc Clear | 367350T |
| 1/2-13 | GR A | Coarse | Zinc Clear | 367355T |
| 5/8-11 | GR A | Coarse | Zinc Clear | 367360 |
| 3/4-10 | GR A | Coarse | Zinc Clear | 367363 |

Nylon Insert Hex Flange Lock Nuts - Metric

Metric Class 10

| SIZE | GRADE | PITCH | FINISH | PART # |
|--------|--------------|--------|-------------|--------|
| M6-1.0 | Carbon Steel | Coarse | Zinc Yellow | 467845 |

| | | | | |
|---------|--------------|--------|-------------|---------|
| M8-1.25 | Carbon Steel | Coarse | Zinc Clear | 467849T |
| M8-1.25 | Carbon Steel | Coarse | Zinc Yellow | 467850 |

| | | | | |
|---------|--------------|--------|-------------|---------|
| M10-1.5 | Carbon Steel | Coarse | Phos & Oil | 467857 |
| M10-1.5 | Carbon Steel | Coarse | Zinc Clear | 467856T |
| M10-1.5 | Carbon Steel | Coarse | Zinc Yellow | 467855 |