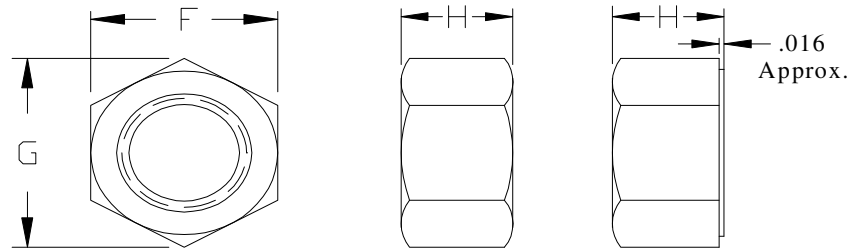




Heavy Hex Jam Nuts



Dimensions for Heavy Hex Nuts (ASME/ANSI B18.2.2)

Size	Width Across Flats F			Thickness H			Width Across Corners G	
	Nom	max	min	Nom	max	min	max	min
1/4	1/2	0.500	0.488	11/64	0.188	0.156	0.577	0.556
5/16	9/16	0.562	0.546	13/64	0.220	0.186	0.650	0.622
3/8	11/16	0.688	0.669	15/64	0.252	0.216	0.794	0.762
7/16	3/4	0.750	0.728	17/64	0.285	0.247	0.866	0.768
1/2	7/8	0.875	0.850	19/64	0.317	0.277	1.010	0.969
9/16	15/16	0.938	0.909	21/64	0.349	0.307	1.083	1.037
5/8	1 1/16	1.062	1.031	23/64	0.381	0.337	1.227	1.175
3/4	1 1/4	1.250	1.213	27/64	0.446	0.398	1.443	1.382
7/8	1 7/16	1.438	1.394	31/64	0.510	0.458	1.660	1.589
1	1 5/8	1.625	1.575	35/64	0.575	0.519	1.876	1.796
1 1/8	1 13/16	1.812	1.756	39/64	0.639	0.579	2.093	2.002
1 1/4	2	2.000	1.938	23/32	0.751	0.687	2.309	2.209
1 3/8	2 3/16	2.188	2.119	25/32	0.815	0.747	2.526	2.416
1 1/2	2 3/8	2.375	2.300	27/32	0.880	0.808	2.742	2.622
1 5/8	2 9/16	2.562	2.481	29/32	0.944	0.868	2.959	2.828
1 3/4	2 3/4	2.750	2.663	31/32	1.009	0.929	3.175	3.035
1 7/8	2 15/16	2.938	2.844	1 1/32	1.073	0.989	3.392	3.242
2	3 1/8	3.125	3.025	1 3/32	1.138	1.050	3.608	3.449
2 1/4	3 1/2	3.500	3.388	1 13/64	1.251	1.155	4.041	3.862
2 1/2	3 7/8	3.875	3.750	1 29/64	1.505	1.401	4.474	4.275
2 3/4	4 1/4	4.250	4.113	1 37/64	1.634	1.522	4.907	4.688
3	4 5/8	4.625	4.475	1 45/64	1.763	1.643	5.340	5.102
3 1/4	5	5.000	4.838	1 13/16	1.876	1.748	5.774	5.515
3 1/2	5 3/8	5.375	5.200	1 15/16	2.006	1.870	6.207	5.928
3 3/4	5 3/4	5.750	5.563	2 1/16	2.134	1.990	6.640	6.341
4	6 1/8	6.125	5.925	2 3/16	2.264	2.112	7.073	6.755