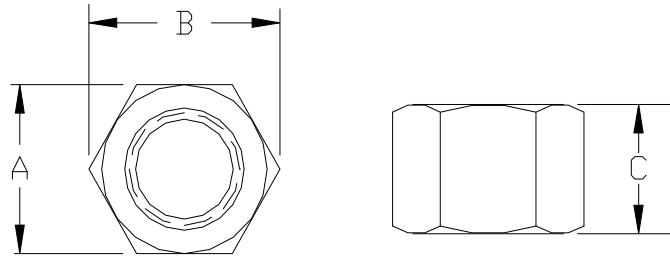


# Coil Nuts



Earnest Part Number	Size	Width Across Flats A		Width Across Corners B		Thickness C	
		max	min	max	min	max	min
300901	1/2" – 6	.875	.850	1.010	.969	.504	.435
300903	3/4" – 4 1/2	1.250	1.088	1.443	1.240	.758	.617
300905	1" – 3 1/2	1.625	1.575	1.876	1.796	1.012	.956
300907	1 1/4 – 3 1/2	2.000	1.938	2.309	2.209	1.251	1.187
300909	1 1/2 – 3 1/2	2.375	2.300	2.742	2.622	1.505	1.433

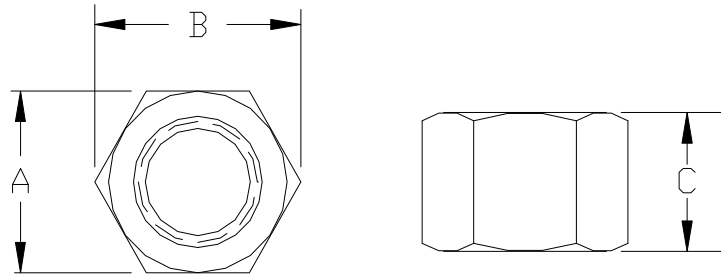
Hex nuts with “coil threads” are designed to be used with coiled thread hex bolts and rods for quick assembly and disassembly of concrete forms. The special wide with a rounded root coil thread form is self-cleaning.

Material: Steel

Size	Safe Working Load Tension (lbs)	
	Using One Nut	Using Two Nuts
1/2" – 6	6,000	9,000
3/4" – 4 1/2	9,000	18,000
1" – 3 1/2"	18,000	37,500
1 1/4 – 3 1/2	27,000	56,250
1 1/2 – 3 1/2	40,500	67,500

Finish: Plain

# Heavy Duty Coil Nuts



Earnest Part Number	Size	Width Across Flats A		Width Across Corners B		Thickness C	
		max	min	max	min	max	min
300914	1/2" – 6	1.125	1.088	1.299	1.240	1.200	1.000
300916	3/4" – 4 1/2	1.250	1.088	1.443	1.240	1.500	1.175
300918	1" – 3 1/2	1.625	1.375	1.876	1.525	2.100	1.900
300920	1 1/4 – 3 1/2	2.000	1.938	2.309	2.209	2.500	2.250
300922	1 1/2 – 3 1/2	2.375	2.300	2.742	2.622	3.000	2.250

Heavy duty coil nuts are designed to be used with coiled thread hex bolts and rods for quick assembly and disassembly of concrete forms. The special wide with a rounded root coil thread form is self-cleaning.

Material: Steel

Size	Safe Working Load Tension (lbs)
1/2" – 6	9,000
3/4" – 4 1/2	18,000
1" – 3 1/2"	37,500
1 1/4 – 3 1/2	56,250
1 1/2 – 3 1/2	67,500

Finish: Plain