



#1 Head Elevator Bolts offer a larger and flatter head than a Carriage Bolt and provide a more balanced distribution of clamping load over a wider area. Typically, these bolts are used to fasten lower tensile load applications such as wood flooring, plastic applications, rubber and canvas conveyor belts. Earnest Machine stocks grade 2 Elevator Bolts in sizes ranging from 1/4" to 3/8" in diameter as well as 1" to 3" in length and can be coated in RoHS compliant Trivalent Zinc Clear Plating.

#### PRODUCT ATTRIBUTES

Square neck locks the bolt in place during installation  
Large flat head distributes clamping load over a wider area  
Great for wood flooring, plastic, rubber and canvas conveyor belt applications  
Plain & RoHS Compliant Trivalent Zinc Clear Plating  
Sizes range from 1/4" to 3/8"

#### MARKETS FOR #1 HEAD ELEVATOR BOLTS

Conveyor Belt Applications  
Agriculture Equipment  
Wood Construction & Carpentry  
RV & Camper Applications

#### THIS PRODUCT IS OFTEN CALLED...

Belt Bolts  
Elevator Bolts  
Round Head Square Neck Bolts  
Grain Silo Bolts



#### ADDITIONAL ROUND HEAD BOLTS WE SUPPLY

Carriage Bolts  
Ribbed Neck Carriage Bolts  
#3 Head Plow Bolts

#### AVAILABLE VALUE ADDED SERVICES

Bulk, full & broken case quantities  
Secondary & rework services available  
Custom packaging services  
Custom plating

BACKED BY THE EARNEST

**Service**  
GUARANTEE

**The right part.  
The right quantity.  
On-time.  
Everytime.**

## GRADE 2 #1 HEAD ELEVATOR BOLTS

#1 Head Elevator Bolts are manufactured in accordance with the latest revision of the following industry standards:

- ASME B18.5** Dimensional Requirements
- SAE J429** Material and Strength Level
- ASME B1.1** Thread Requirements
- ASTM F788** Surface Discontinuities
- ASME B18.18** Inspection and Quality Assurance

### THREADS

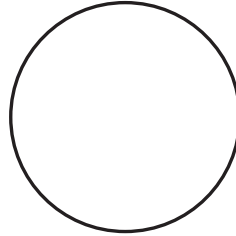
Threads made to requirements of ASME B1.1 Unified Threads (UNC) Class 2A  
Thread acceptance per ASME B1.3, System 21

### PLATING

Plain  
Zinc Clear (RoHS compliant Cr3+)

## MATERIAL AND PHYSICAL PROPERTIES

### Grade 2



### Chemical Composition:

| CARBON (C) |      | PHOSPHORUS (P) | SULFUR (S) | BORON (B) |
|------------|------|----------------|------------|-----------|
| Max        | Min  | Max            | Max        | Max       |
| 0.55       | 0.25 | 0.025          | 0.025      | 0.003     |

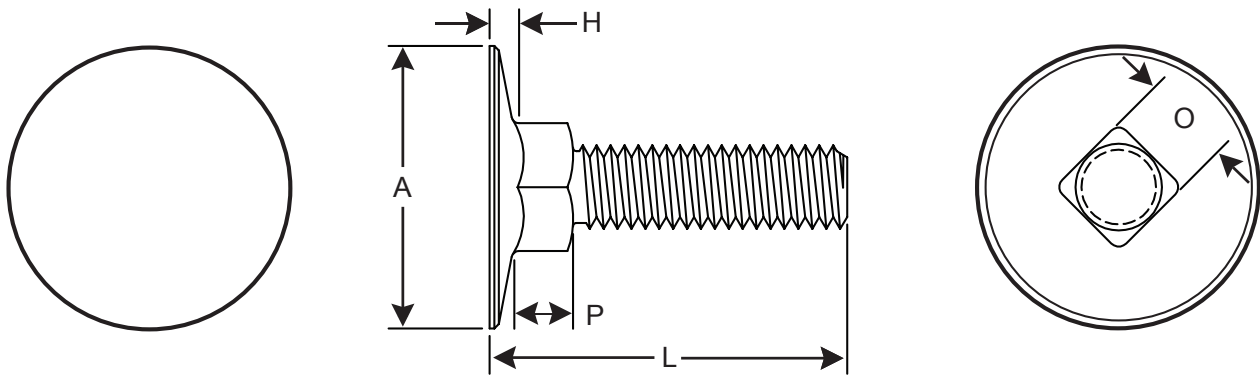
### Hardness

| GRADE 2    |
|------------|
| HRB 80/100 |

### Tensile Strength

| GRADE 2        |
|----------------|
| 74,000 psi min |

## DIMENSIONS FOR GRADE 2 #1 HEAD ELEVATOR BOLTS



| SIZE | HEAD DIAMETER (A) |       | HEAD HEIGHT (H) |       | SQUARE WIDTH (O) |       | SQUARE DEPTH (P) |       |
|------|-------------------|-------|-----------------|-------|------------------|-------|------------------|-------|
|      | MAX               | MIN   | MAX             | MIN   | MAX              | MIN   | MAX              | MIN   |
| 1/4  | 1.008             | 0.938 | 0.098           | 0.078 | 0.280            | 0.245 | 0.219            | 0.188 |
| 5/16 | 1.227             | 1.157 | 0.114           | 0.094 | 0.342            | 0.307 | 0.250            | 0.219 |
| 3/8  | 1.352             | 1.272 | 0.145           | 0.125 | 0.405            | 0.368 | 0.250            | 0.219 |

\*The specifications shown on this sheet are not intended to be used in the production of parts. Earnest Machine is not responsible or liable in any manner for any production errors and we certify the information present on this specification sheet is correct to the best of our knowledge. ©2021 Earnest Machine Products

## #1 Head Elevator Bolts - Inch

### Grade 2

| SIZE          | GRADE | THREAD  | PITCH  | FINISH       | PART #  |
|---------------|-------|---------|--------|--------------|---------|
| 1/4-20x3/4    | GR 2  | Full    | Coarse | Plain Finish | 255032  |
| 1/4-20x1 1/4  | GR 2  | Full    | Coarse | Plain Finish | 255072  |
| 1/4-20x1 3/4  | GR 2  | Partial | Coarse | Plain Finish | 255112  |
| 1/4-20x2      | GR 2  | Partial | Coarse | Plain Finish | 255132  |
| 1/4-20x3      | GR 2  | Partial | Coarse | Zinc Clear   | 255173T |
| 1/4-20x3      | GR 2  | Partial | Coarse | Plain Finish | 255172  |
| 5/16-18x1 1/2 | GR 2  | Partial | Coarse | Plain Finish | 256092  |
| 5/16-18x1 1/4 | GR 2  | Full    | Coarse | Plain Finish | 256072  |
| 5/16-18x1 3/4 | GR 2  | Partial | Coarse | Plain Finish | 256112  |
| 5/16-18x2     | GR 2  | Partial | Coarse | Plain Finish | 256132  |
| 5/16-18x2 1/2 | GR 2  | Partial | Coarse | Plain Finish | 256152  |
| 5/16-18x2 1/4 | GR 2  | Partial | Coarse | Plain Finish | 256142  |
| 5/16-18x3     | GR 2  | Partial | Coarse | Plain Finish | 256172  |
| 3/8-16x1      | GR 2  | Full    | Coarse | Plain Finish | 257052  |
| 3/8-16x1 1/4  | GR 2  | Full    | Coarse | Plain Finish | 257072  |
| 3/8-16x1 1/4  | GR 2  | Full    | Coarse | Zinc Clear   | 257073T |
| 3/8-16x1 1/2  | GR 2  | Full    | Coarse | Plain Finish | 257092  |
| 3/8-16x1 3/4  | GR 2  | Partial | Coarse | Plain Finish | 257112  |
| 3/8-16x2      | GR 2  | Partial | Coarse | Plain Finish | 257132  |
| 3/8-16x2 1/2  | GR 2  | Partial | Coarse | Plain Finish | 257152  |