

Most often used on heavy tractors & agricultural equipment — Clipped Head Plow Bolts are designed to attach plow shears to agricultural plows, allowing the tractor to churn up dirt and break up the soil. These bolts feature a flat round head with trimmed sides which prevents the bolt from loosening once tightened. Earnest Machine stocks Clipped Head Plow Bolts in Grade 5 with diameters ranging from 3/8" to 1/2" and lengths ranging from 1 1/4" to 1 1/2".

#### PRODUCT ATTRIBUTES

Sizes range from 3/8" to 1/2"

Available in Grade 5 for added strength

Flat round head with trimmed sides prevents bolt from loosening over time

#### MARKETS FOR CLIPPED HEAD PLOW BOLTS

Agriculture

#### THIS PRODUCT IS OFTEN CALLED...

Tyne Bolt

Tractor Bolt



#### AVAILABLE VALUE ADDED SERVICES

Bulk, full & broken case quantities

Secondary & rework services available

Custom packaging services

Custom plating

BACKED BY THE EARNEST

**Service**  
GUARANTEE

**The right part.  
The right quantity.  
On-time.  
Everytime.**

## GRADE 5 CLIPPED HEAD PLOW BOLTS

Clipped Head Plow Bolts are manufactured in accordance with the latest revision of the following industry standards:

- ASME B18.9** Dimensional Requirements
- SAE J429** Material and Strength Level
- ASME B1.1** Thread Requirements
- ASTM F788** Surface Discontinuities
- ASME B18.18** Inspection and Quality Assurance

## THREADS

Threads made to requirements of ASME B1.1 Unified Threads (UNC) Class 2A  
Thread acceptance per ASME B1.3, System 21

## PLATING

Plain  
Zinc Clear (RoHS compliant Cr3+)

## MATERIAL AND PHYSICAL PROPERTIES

### Grade 5



### Chemical Composition:

CARBON (C)		PHOSPHORUS (P)	SULFUR (S)	BORON (B)
Max	Min	Max	Min	Max
0.55	.015	0.025	0.025	0.003

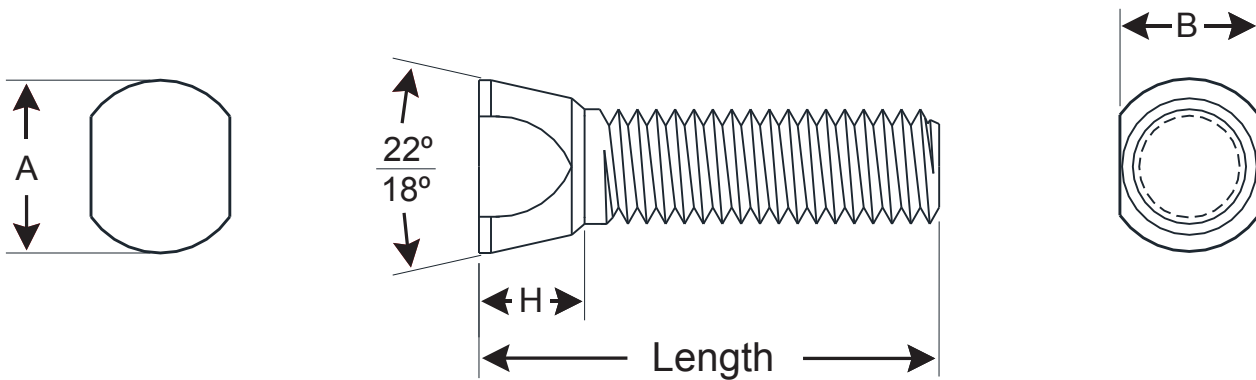
### Hardness

GRADE 5
HRC 25/34

### Tensile Strength

GRADE 5
120,000 psi min

## DIMENSIONS FOR GRADE 5 CLIPPED HEAD PLOW BOLTS



SIZE	HEAD DIAMETER (A)		WIDTH ACROSS CLIPPED FLATS (B)		HEAD HEIGHT (H)	
	MAX	MIN	MAX	MIN	MAX	MIN
3/8	0.565	0.535	0.470	0.445	0.350	0.335
7/16	0.605	0.595	0.540	0.530	0.391	0.359
1/2	0.680	0.670	0.580	0.570	0.391	0.359

\*The specifications shown on this sheet are not intended to be used in the production of parts. Earnest Machine is not responsible or liable in any manner for any production errors and we certify the information present on this specification sheet is correct to the best of our knowledge. ©2021 Earnest Machine Products

## Clipped Head Plow Bolts - Inch

### Grade 5

SIZE	GRADE	THREAD	PITCH	FINISH	PART #
3/8-16x1 1/4	GR 5	Full	Coarse	Plain Finish	199002
3/8-16x1 1/4	GR 5	Full	Coarse	Zinc Clear	199003T
3/8-16x1 1/2	GR 5	Full	Coarse	Plain Finish	199012
7/16-14x1 1/4	GR 5	Full	Coarse	Plain Finish	199022
7/16-14x1 1/2	GR 5	Full	Coarse	Plain Finish	199032
1/2-13x1 1/4	GR 5	Full	Coarse	Plain Finish	199042
1/2-13x1 3/8	GR 5	Full	Coarse	Plain Finish	199062
1/2-13x1 1/2	GR 5	Full	Coarse	Plain Finish	199052